

E442/E489系列取力器

E442/E489 Series Power Take-offs



E489-XQAHX-A3XK



E489-XQAHX-A3XD



E442-XQAHX-A3XK



E442-XQAHX-A3XD

E489 X Q A H X - A 3 X K

Basic Model
E489 / E442

Mounting Option
 X = Standard Mount
 G = Standard Mount w/ Metric Stud Kit
 K = Standard Mount w/o Stud Kit
 Q = Eaton Endurant
 Z = Deep Mount

Gear Ratio
 A = 14/39 R = 22/24
 C = 17/37 S = 24/22
 F = 21/37 U = 26/20
 H = 23/35 W = 26/17
 L = 25/34 X = 38/21
 Q = 19/24

Input Option
 IT: Without Gear AH: Fuller Series
 BG: TTC Transmission DC: Mack Transmission
 DA: Eaton Transmission

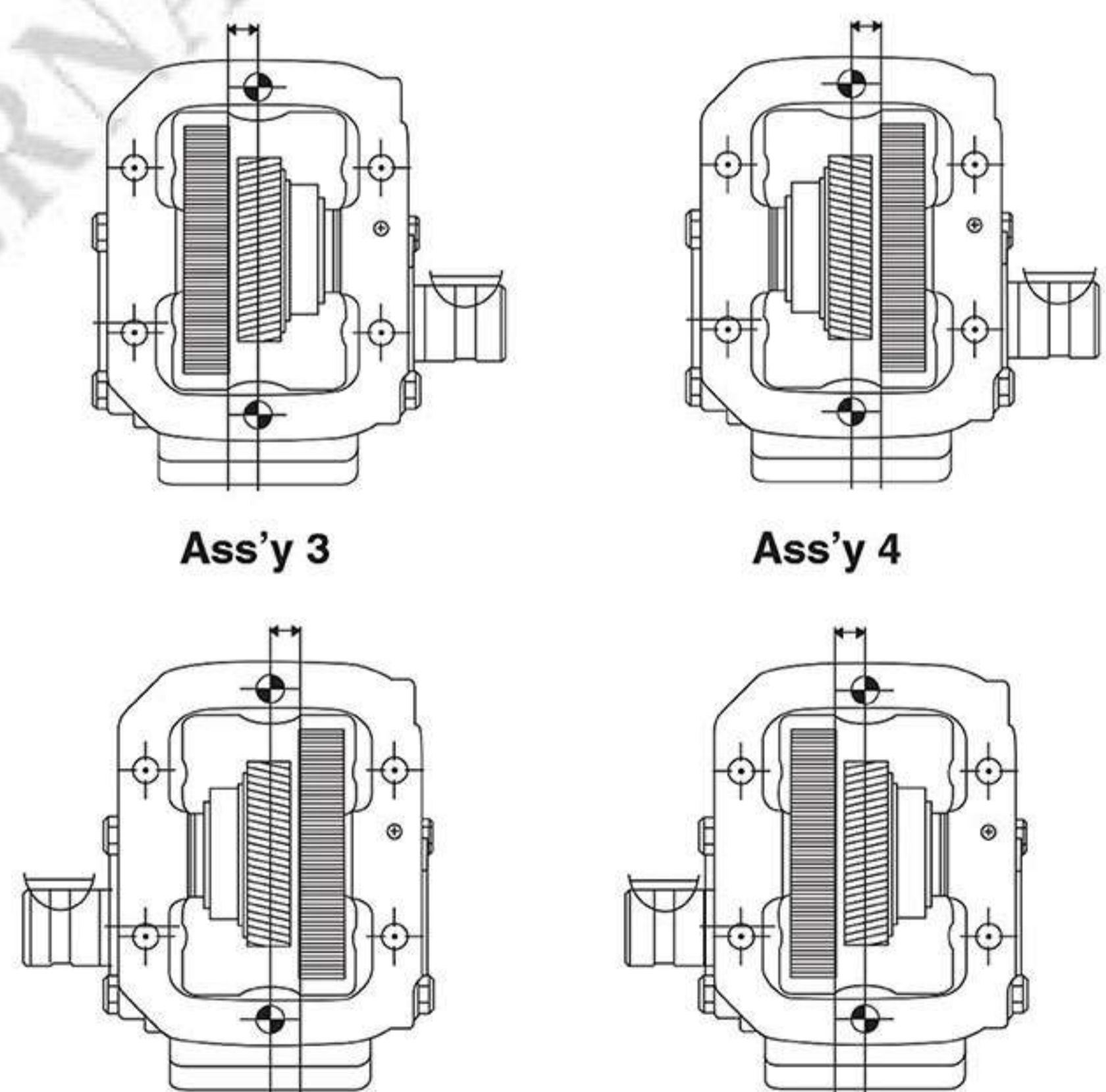
Lube Option
 X = No Pressure Lube
 P = Pressure Lube

Shift Option
¹A = Air Shift
 V = Air Shift w/o Installation Kit
¹P = 12V Elec/Air Shift
 Q = 24V Elec/Air Shift
 D = Eaton Endurant™ 12V Elec/Air Shift
²¹S = Air Shift w/ PTO/Dump Pump Combo Valve
 w/ Kick Out w/ Neutral Spring Return
²¹T = Air Shift w/ PTO/Dump Pump Combo Valve
 w/o Kick Out w/ Neutral Spring Return
²¹U = Air Shift w/ PTO/Dump Pump Combo Valve
 w/ Kick Out w/o Neutral Spring Return
¹W = Wire Shift
 X = Wire Shift w/o Cable & Knob
 M = Constant Mesh
 H = No Shifter Assembly
 C = Special Shift Control & Bracket Kit

Output Option
Driveline Output
 XD = Rd Standard Shaft (1-1/4" - 5/16" Key)
Pump Mount
 XK = SAE B 2 or 4-Bolt Flange, SAE B Shaft (7/8" - 13T)

Assembly Arrangement
 3, 4, 5, 6

1 Includes mounting parts
 21 Includes installation kit, console sold separately

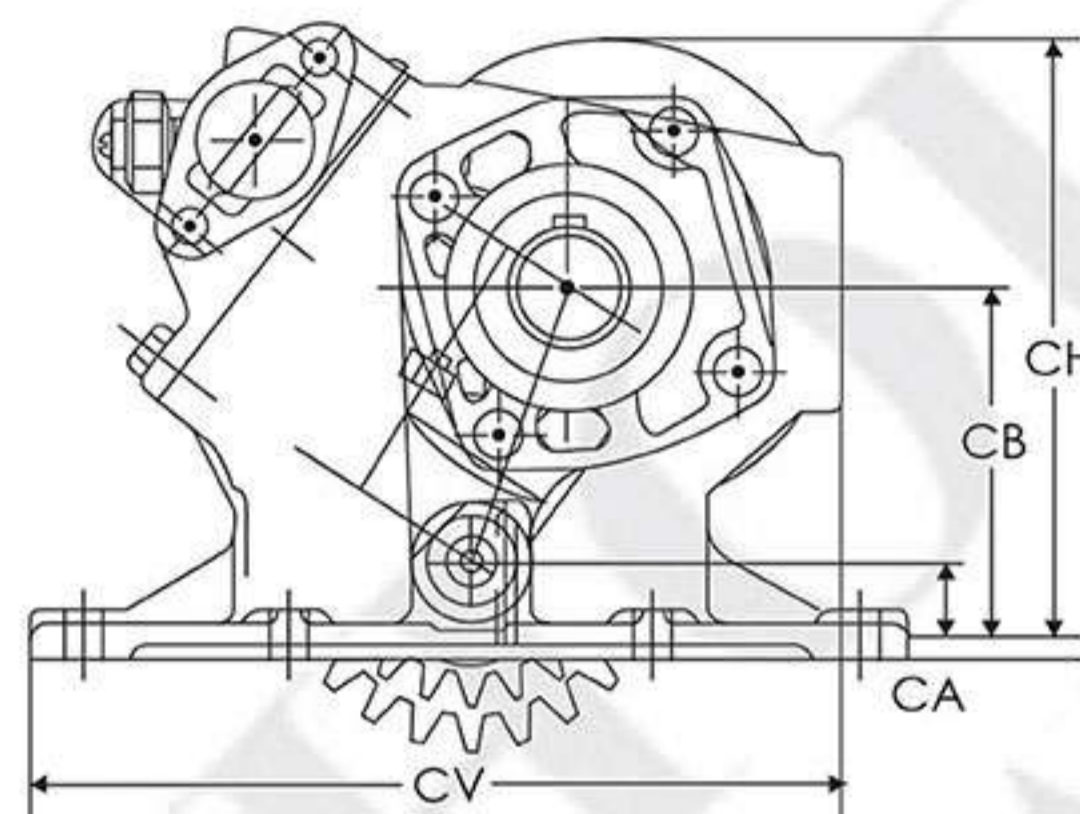
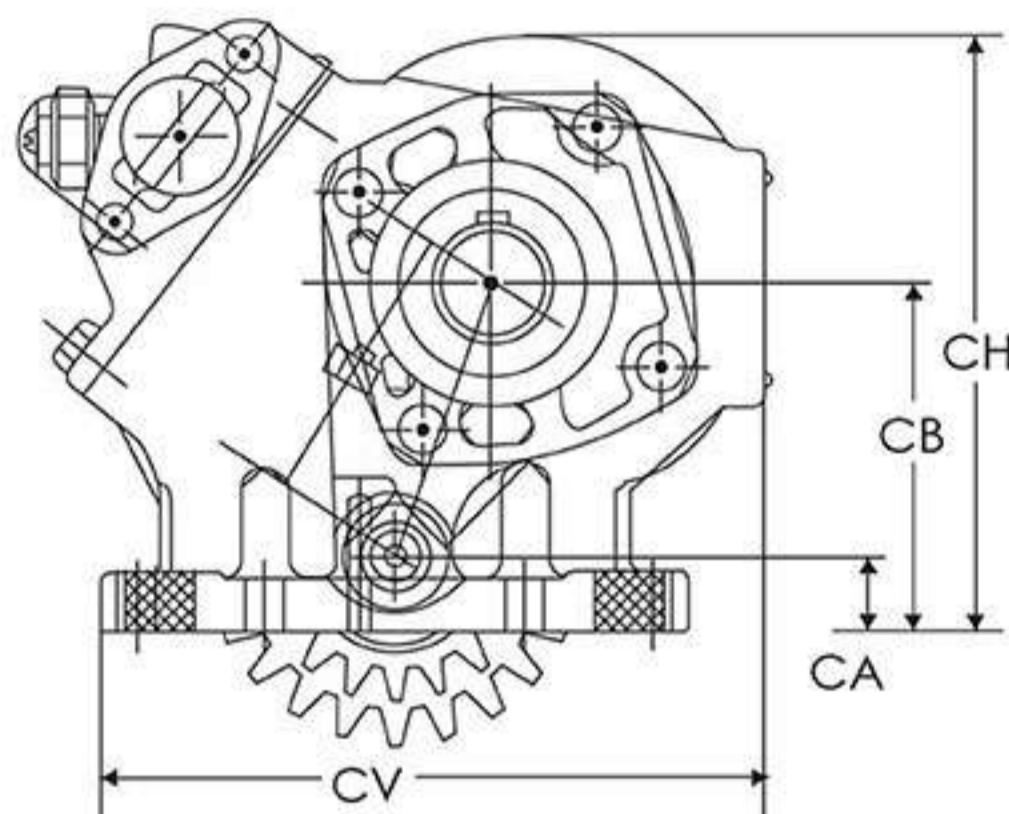


Ass'y 3 **Ass'y 4**

Ass'y 5 **Ass'y 6**

ETERNAL E442/E489 SERIES DIMENSIONS

HOUSING DIMENSIONS



ETERNAL SERIES		MOUNT	CA	CB	CD	CH	CV
E442 SERIES	1-P-557X	Standard	0.793	3.800 (F, H, L, R, S, U) 3.701 (Q, W, X)	3.317 (F, H, L, R, S, U) 3.087 (Q, W, X)	6.428	7.000
	1-P-558X	Deep	0.573	3.580 (F, H, L, R, S, U) 3.481 (Q, W, X)	3.317 (F, H, L, R, S, U) 3.087 (Q, W, X)	6.207	7.000
E489 SERIES	1-P-552X	Standard	1.072	4.079 (F, H, L, R, S, U) 3.980 (Q, W, X)	3.317 (F, H, L, R, S, U) 3.087 (Q, W, X)	6.708	8.500
	1-P-562X	Deep	0.930	3.937 (F, H, L, R, S, U) 3.838 (Q, W, X)	3.317 (F, H, L, R, S, U) 3.087 (Q, W, X)	6.566	8.500

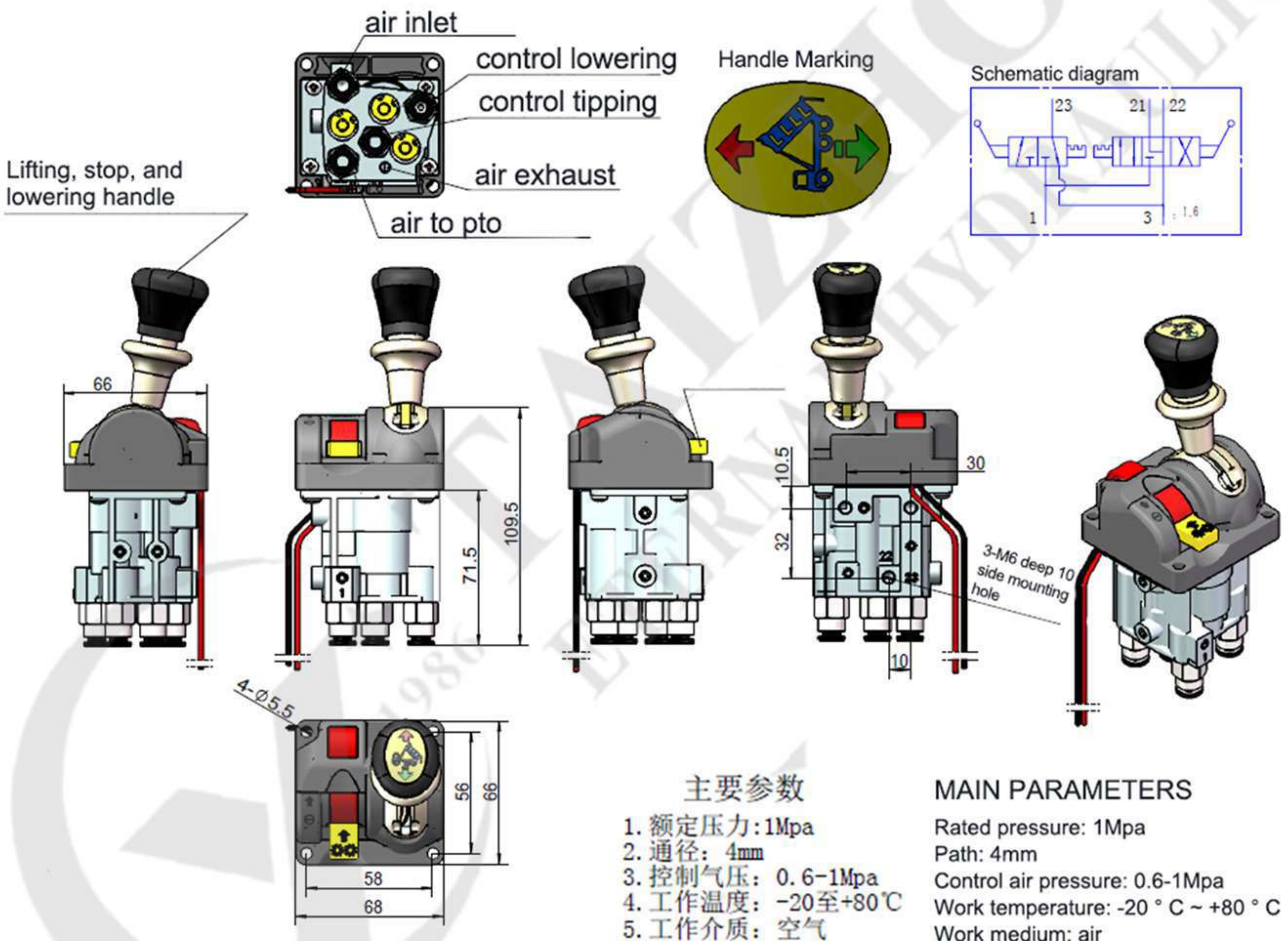


ETL503WK PTO Air Control Valve

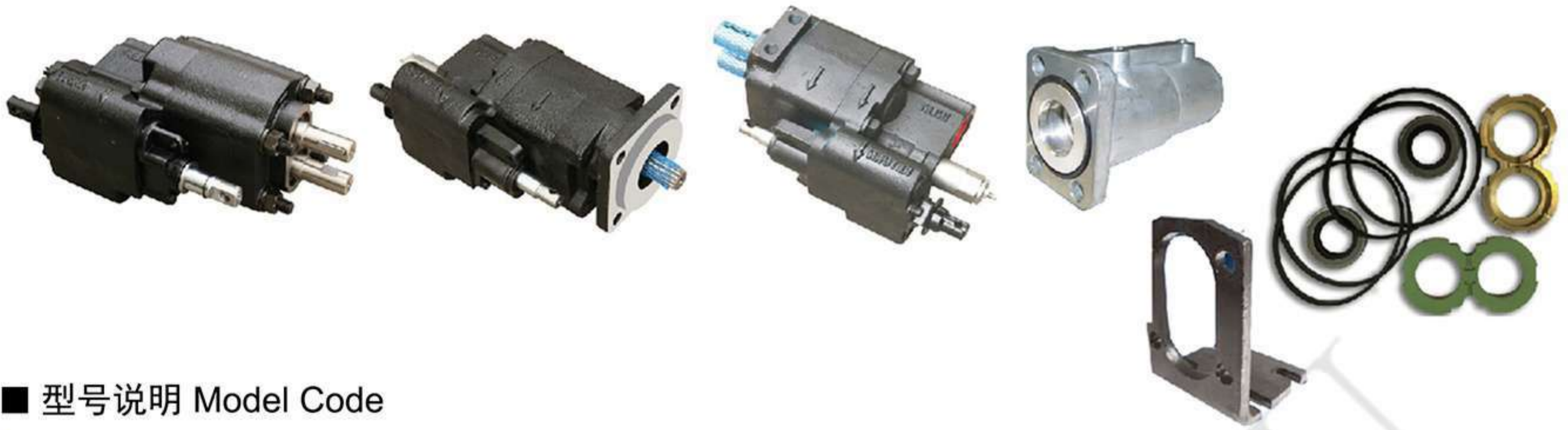
hydraulic control valve has the lift, stop, drop of control handle and power take off controlling switch. The valve could arbitrary adjust the pressure in the process of dropping and control the reversing valve of air oil discharge quantity. When it stops or drops, this valve still has self locking function. Most importantly, the transportation clearly and definitely.



尺寸图 Dimensional Date

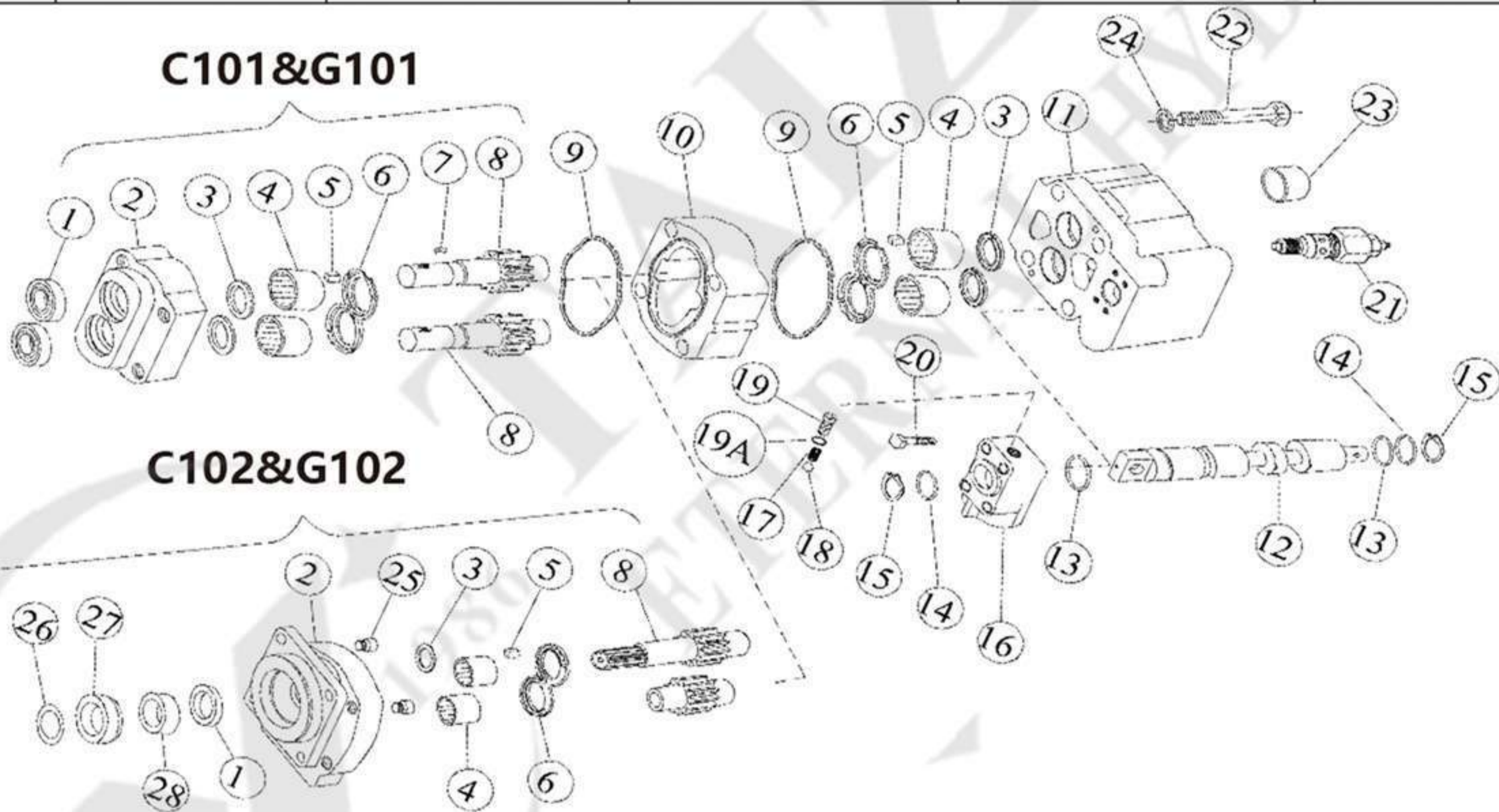


C101/C102&G101/G102系列齿轮泵 C101/C102&G101/G102 Series Gear Pump



型号说明 Model Code

C102	-2.5	L	AS	-3	-20
型号 Model	齿宽 Gear Width	旋向 Rotation	操作方式 Operation style	回路数 Line No	安全阀压力 Relief Valve Setting
G101	0.75"	L: 逆时针 CW Rotation R: 顺时针 CCW Rotation	MS: 手动 Manual AS: 气动 Airshift	2: 2 回路 2 Line installation 3: 3 回路 3 Line installation	20: 137bar(2000PSI) 25: 172bar(2500PSI)
G102	1.5"				
	2.0"				
C101	2.0"				
C102	2.5"				



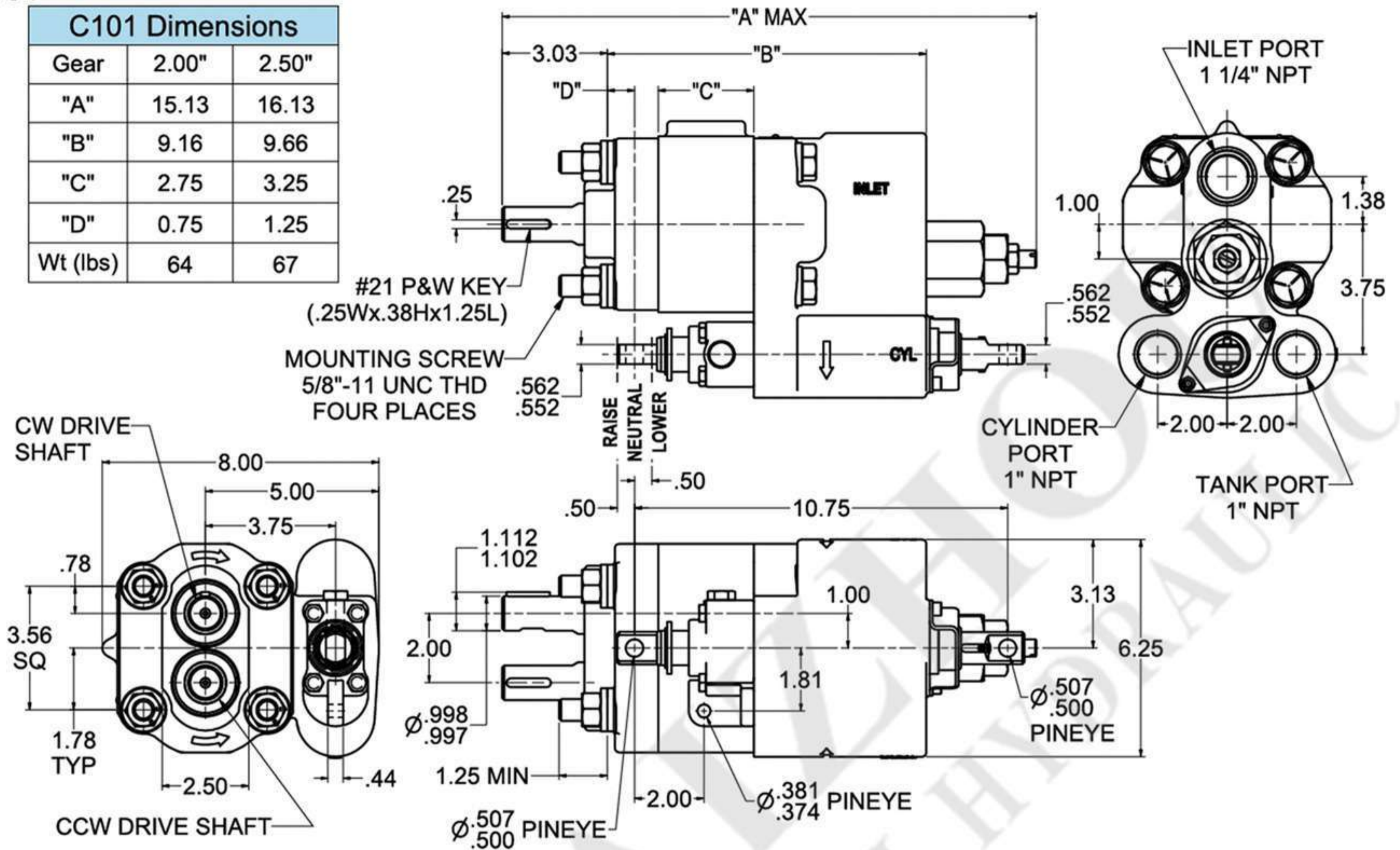
ITEM	DESCRIPTION	ITEM	DESCRIPTION	ITEM	DESCRIPTION
1	Shaft Seal	11	Port End Cover	20	Cap Screw
2	Lip Seal	12	Valve Spool	21	Relief Valve
3	Shaft Ring Seal	13	O-Ring	22	Cap Crew
4	Roller Bearing	14	Retainer Ring	23	Sleeve(Optional)
5	Pocket Seal	15	Snap Ring	24	Washers
6	Thrust Plate	16	Valve Cap	25	Check Assembly
7	Shaft Key	17	Poppet Spring	26	Snap Ring
8	Gear Set	18	Steel Ball	27	Spacer
9	Gasket Seal	19	Detent Retainer	28	Retainer
10	Gear Housing	19A	Local Washer		

C101/C102&G101/G102系列齿轮泵 C101/C102&G101/G102 Series Gear Pump

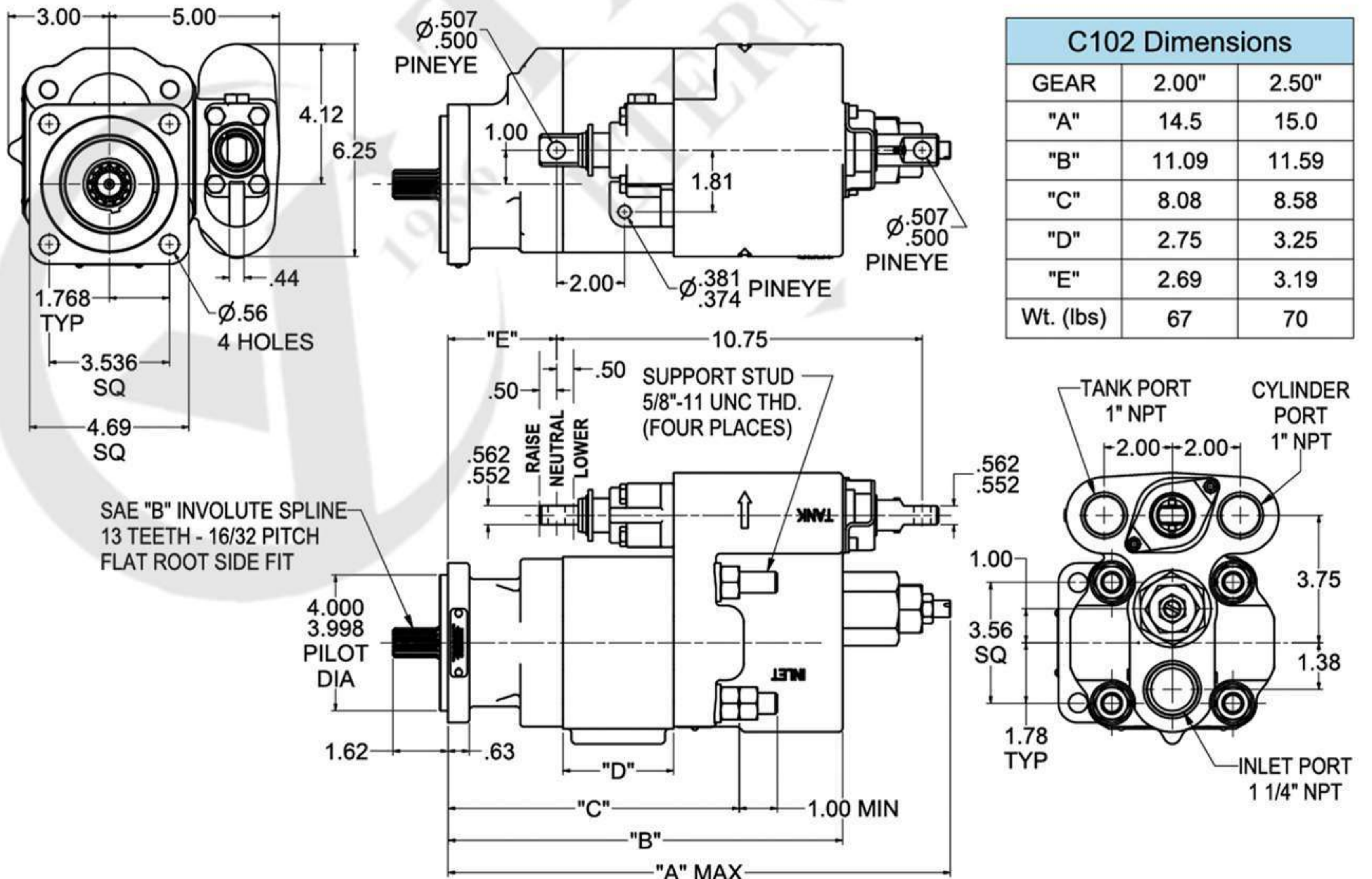
尺寸图 Dimension

C101

C101 Dimensions		
Gear	2.00"	2.50"
"A"	15.13	16.13
"B"	9.16	9.66
"C"	2.75	3.25
"D"	0.75	1.25
Wt (lbs)	64	67



C102(CCW Rotation Shown)

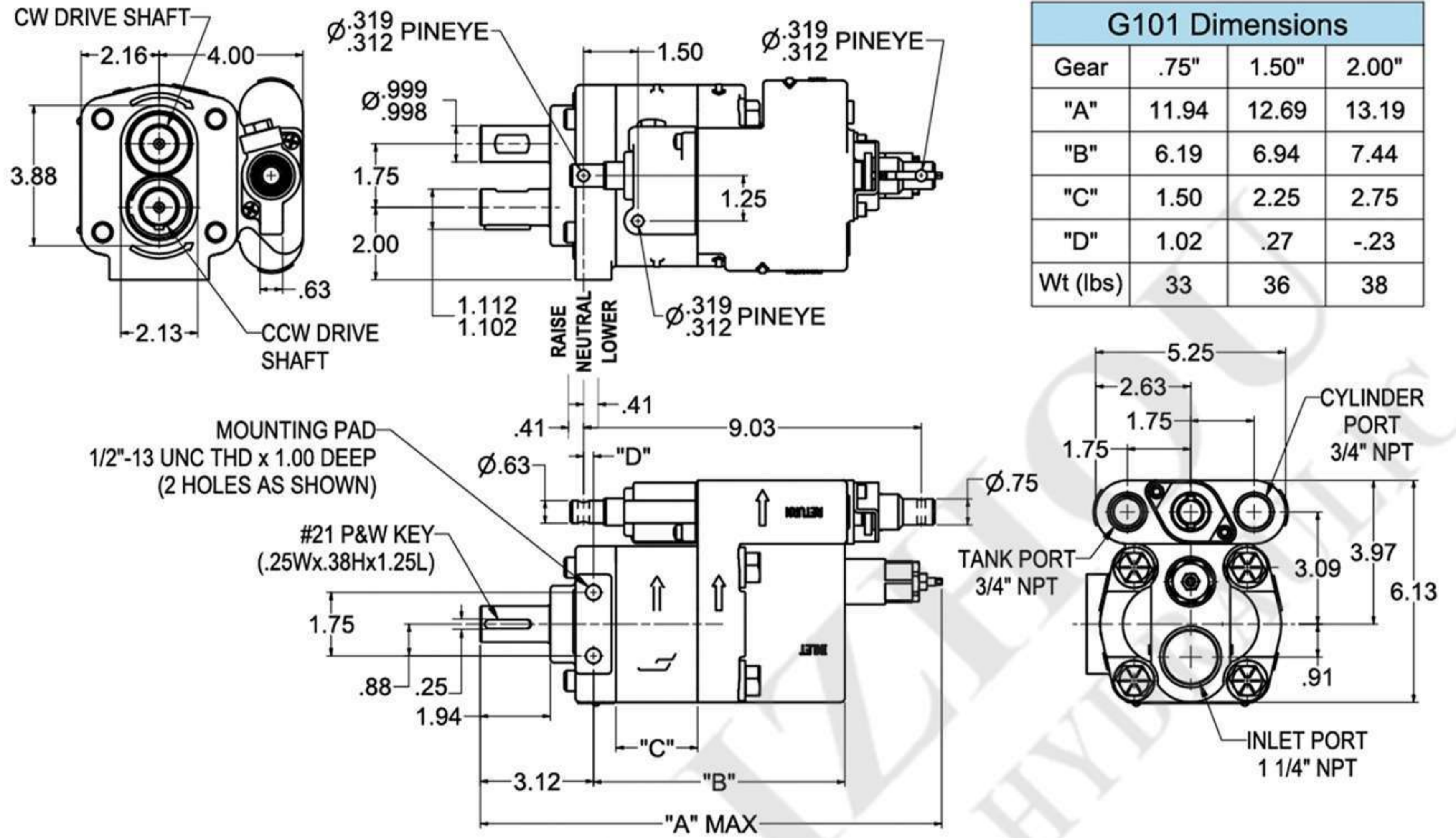


C102 Dimensions		
GEAR	2.00"	2.50"
"A"	14.5	15.0
"B"	11.09	11.59
"C"	8.08	8.58
"D"	2.75	3.25
"E"	2.69	3.19
Wt. (lbs)	67	70

C101/C102&G101/G102系列齿轮泵 C101/C102&G101/G102 Series Gear Pump

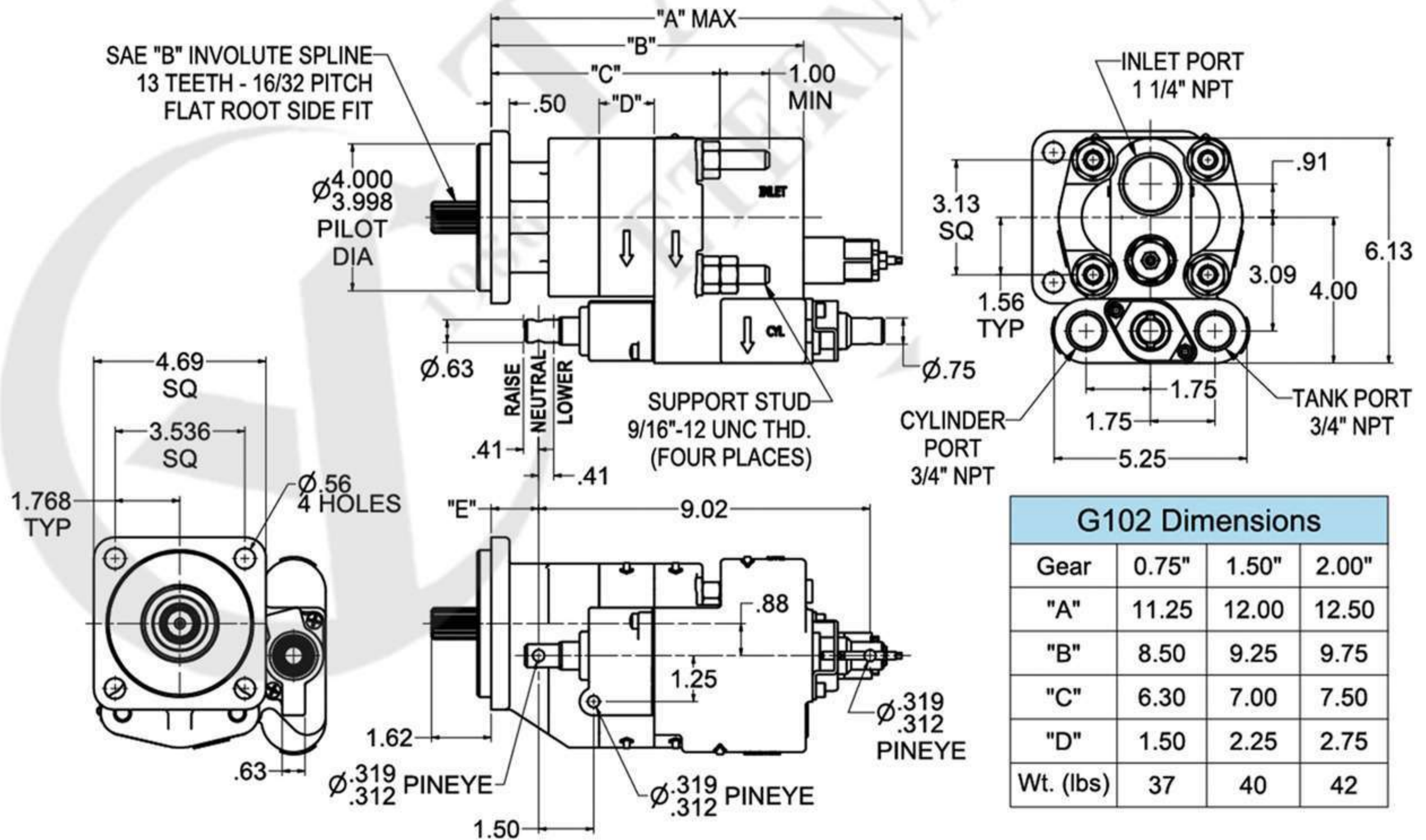
尺寸图 Dimension

G101



Gear	.75"	1.50"	2.00"
"A"	11.94	12.69	13.19
"B"	6.19	6.94	7.44
"C"	1.50	2.25	2.75
"D"	1.02	.27	-.23
Wt (lbs)	33	36	38

G102(CW Rotation Shown)



Gear	0.75"	1.50"	2.00"
"A"	11.25	12.00	12.50
"B"	8.50	9.25	9.75
"C"	6.30	7.00	7.50
"D"	1.50	2.25	2.75
Wt. (lbs)	37	40	42