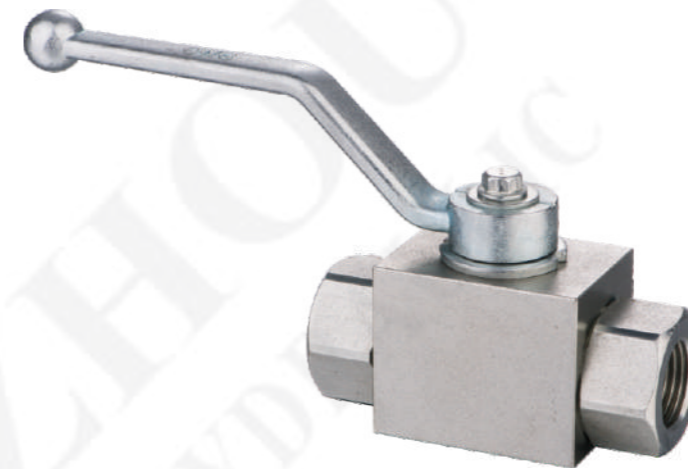




诚信 专业 创新 双赢



台州永畅液压机械有限公司
Taizhou Eternal Hydraulic Machine Co.,Ltd.

ADD: 浙江省台州市仙居县安州街道西泉路11号
TEL: +86-576-89370768
Mobile: +86-13656579545
FAX: +86-576-89370769
E-mail: leo@xjetl.com

台州永畅液压机械有限公司
Taizhou Eternal Hydraulic Machine Co.,Ltd.

公司简介

台州永畅液压机械有限公司是一家集研发、设计、销售于一体的实力型企业，在液压领域拥有十多年国内外的销售经验。

永畅液压致力于打造“液压机械产品全球一站式采购基地”，通过专业的液压解决方案和最优的服务与价格来赢得客户信赖。公司坚信只有最好才能服务最好，努力成为国内外客户液压机械产品的采购首选！

公司主营柱塞泵、叶片泵、齿轮泵、液压阀、液压马达、液压电机、油冷却器、蓄能器压力表等液压辅件与液压系统，六大类近万余种液压产品。

永畅液压一直秉承“质量就是企业的灵魂”，专注海外市场开拓，为全球企业提供液压方案选择；公司与国内外多家知名品牌建立了战略合作关系，通过品牌化营销，逐步成为液压领域的新品牌。

诚邀各位英才合作发展！

Company Profile

Taizhou Eternal Hydraulic Machinery Co., Ltd. is one strength professional enterprise which integrates Design&Develop&Sale for hydraulic components and with more than 10 years experience focusing on the Exporting and Domestic Market in Hydraulic Field.

Eternal Hydraulic commit ourselves to the **No.1 Global One-Stop Mall for hydraulic&Machinery in Worldwide**, with the professional hydraulic solutions and nice quality&price products to satisfy with each customers. The company firmly believes that **"Only The Best Can Satisfied The Best"**, become the **First Purchase Choice** of hydraulic components for all customers in the world.

Our products including Piston Pump, Vane Pump, Gear Pump, Hydraulic Valve, Hydraulic Motor, Electric Motor, Oil Cooler, Accumulator and other hydraulic accessories etc.

Eternal Hydraulic has been adhering to the "Quality is the soul of enterprise" as the enterprises' core, focusing on the overseas Market development, also providing hydraulic products for global enterprises. Cooperate with some well-known brands and promote our Own brand in worldwide, gradually become a new Famous brand in hydraulic fields.

Inviting all ability partners to join in us to create the bright future.

目录 CONTENTS

台州永畅液压机械有限公司
Taizhou Eternal Hydraulic Machine Co.,Ltd.

产品	型号	页码
	VRPD双向液压锁 DOUBLE PILOT CHECK VALVE	01
	VRPC 双向液压锁 DOUBLE PILOT CHECK VALVE	02
	VRPDC双向液压锁 DOUBLE PILOT CHECK VALVE	03
	VRPDB双向液压锁 DOUBLE PILOT CHECK VALVE	04
	VRPE单向液压锁 SINGLE PILOT CHECK VALVE	05
	VSQL管式顺序阀 TUBULAR SEQUENCED VALVES	06
	YS6、YSS、F42液压锁 DOUBLE PILOT CHECK VALVE	07
	VBSO 平衡阀 VBSO COUNTERBALANCE VALVES	08
	VBCD-DE A-FLV 双向平衡阀 DOUBLE OVERCENTER VALVE	11
	PT系列高压测压接头 PRESSURE TESTING HOSE AND ADAPTER	12
	KHB 直通高压球阀 KHB STRAIGHT BALL VALVE	13
	KHB3K 三通高压球阀 KHB3K 3-WAY BALL VALVE	15

产品	型号	页码
	KHB*F系列高压球阀 KHB*F BALL VALVE	17
	S、VU单向阀 S、VUCHECKVALVE	18
	KHBG系列高压球阀 KHBGBALL VALVE	19
	带气动执行器球阀 BALLVALVE WITH PNEUMATIC ACCUTORS	20
	KHP板式液压球阀 KHP BALL VALVE	21
	SKBV矿用球阀 SKBV MINING BALL VALVE	22
	VUSF梭阀 SHUTTLE VALVE	23
	VURF单向节流阀 VURF ONE-WAY THROTTLE VALVE	24
	VBRF节流阀 VBRF THROTTLE VALVE	25
	STU单向节流阀 STU one-way throttle valve	26
	STB节流阀 THROTTLE VALVE	27
	DF3转阀 DF 3-WAYS DIVERTER VALVE	28

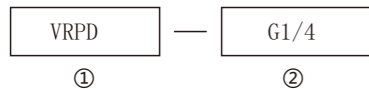
产品	型号	页码
	DF6转阀 DF 6-WAYS DIVERTER VALVE	29
	低压球阀 BALL VALVE	30
	23QDF球式电磁换向阀 BALL TYPE SOLENOID CHANGE VALVE	31
	23QDF-4球式电磁换向阀 SINGLE PILOT CHECK VALVE	32
	QXF-5型充气阀 PRESSURE GAUGE SWITCH	33
	KVH电磁多路阀 KVH SECTIONAL SOLENOID DIRECTION CONTROL VALVES	34
	DCV40系列多路阀 MONOBLOCK VALVE DCV40	35
	DCV60A系列多路阀 SECTION VALVE DCV60A	36



技术参数/TECHNICAL DATA:

应用材料/MATERIAL EMPLOYED: 阀体/BODY: 钢/Steel; 阀芯/VALVES: 钢/Steel; 密封/SEALS: 丁腈胶/NBR
 适用工作环境/OPERATIONAL RANGE: 安装/MOUNTING: 按需/as preferred
 温度/TEMPERATURES: 理想工作温度: +40°C ~ +70°C; 最高工作温度: +90°C; 最低/最高环境温度: -20°C ~ +60°C

型号说明/MODEL CODE:



- ① 双向液压锁系列代号/double pilot check valve series code: VRPD型/VRPD type
- ② 阀体连接螺纹形式/connection thread dimension: BBSP

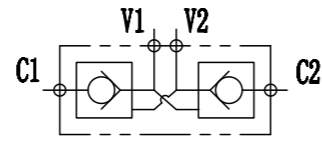
型号 /TYPE	最大压力 (bar)	最大流量 (L/min)	先导比 (pilot ratio)	开启压力 (cracking pressure)(bar)
VRPD-G1/4	350	20	1:4.5	3.5
VRPD-G3/8		50	1:4	3.5
VRPD-G1/2	300	80	1:4	3.5

型号 /TYPE	A	B	C	D	E	F	G	H	I	SW
VRPD-G1/4	115	68	G1/4	38	7	7	40	30	13	24
VRPD-G3/8	139	80	G3/8	40	8.5	15	50	40	16	27
VRPD-G1/2	173	90	G1/2	40	8.5	15	60	40	20	30

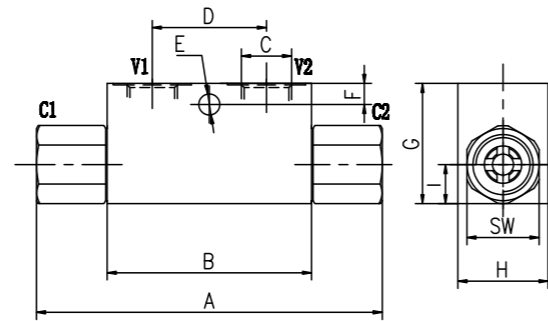
应用/APPLICATIONS:

液控单向阀允许一个方向的自由流动(极小的压降);而反方向则通常是关闭的,当有来自另一个油路先导压力方可打开该阀。/The pilot operated check valves allow free flow in a direction (with low pressure drops)and stop it in the opposite direction until they are opened by the pilot pressure(coming from the other line of the circuit).

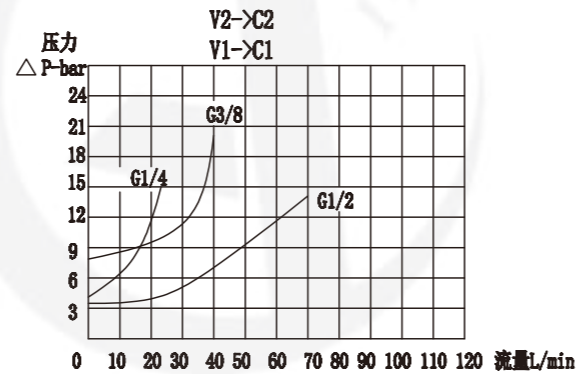
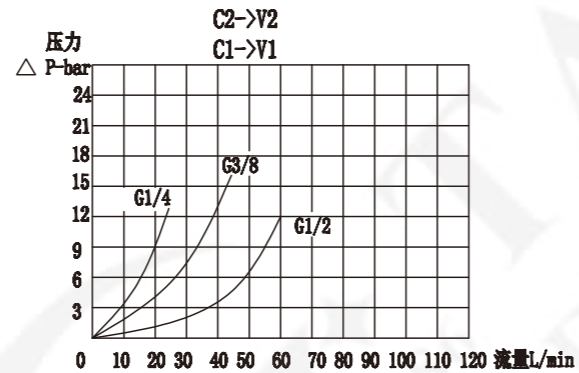
图形符号/SYMBOL:



外形尺寸/OVER DIMENSION:



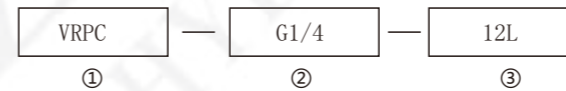
流量曲线图/FLOW DIAGRAM:



技术参数/TECHNICAL DATA:

应用材料/MATERIAL EMPLOYED: 阀体/BODY: 钢/Steel; 阀芯/VALVES: 钢/Steel; 密封/SEALS: 丁腈胶/NBR
 适用工作环境/OPERATIONAL RANGE: 安装/MOUNTING: 按需/as preferred
 温度/TEMPERATURES: 理想工作温度: +40°C ~ +70°C; 最高工作温度: +90°C; 最低/最高环境温度: -20°C ~ +60°C

型号说明/MODEL CODE:



- ① 双向液压锁系列代号/double pilot check valve series code: VRPC型/VRPC type
- ② 阀体连接螺纹形式/connection thread dimension: BBSP
- ③ 接头连接螺纹形式/ Threaded connection type: 12L, 15L, 18L(DIN2353)

型号 /TYPE	最大压力 (bar)	最大流量 (L/min)	先导比 (pilot ratio)	开启压力 (cracking pressure)(bar)
VRPC-G1/4-12L	350	20	1:4.5	3.5
VRPC-G3/8-12L		20	1:4.5	3.5
VRPC-G3/8-15L		50	1:4	3.5
VRPC-G1/2-15L		50	1:4	3.5
VRPC-G1/2-18L	300	80	1:4	3.5

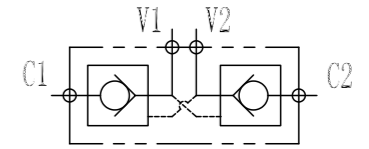
型号 /TYPE	A	B	C	D	E	F	G	H	I	RA	LW	d1	SW
VRPC-G1/4-12L	115	68	G1/4	38	7	7	40	30	13	12.3	12	M18x1.5	24
VRPC-G3/8-12L	115	68	G3/8	38	7	7	40	30	13	12.3	15	M18x1.5	24
VRPC-G3/8-15L	139	80	G3/8	40	8.5	15	50	40	16	15.3	15	M22x1.5	27
VRPC-G1/2-15L	139	80	G1/2	40	8.5	15	50	40	16	15.3	18	M22x1.5	27
VRPC-G1/2-18L	163	90	G1/2	40	8.5	15	60	40	20	18.3	18	M26x1.5	30

以上型号产品均不带卡套接头,如需带卡套型号后面加“-KT”
 带卡套订货示例: VRPC-G1/4-12L-KT
 All types of products are not with the compression fitting sets of joints, if you need it add “-KT” after the type
 With compression fitting sets Ordering example: VRPC-G1/4-12L-KT

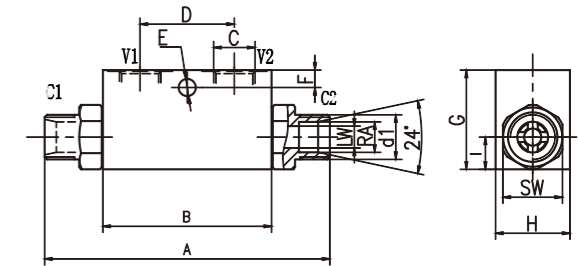
应用/APPLICATIONS:

液控单向阀允许一个方向的自由流动(极小的压降);而反方向则通常是关闭的,当有来自另一个油路先导压力方可打开该阀。/The pilot operated check valves allow free flow in a direction (with low pressure drops)and stop it in the opposite direction until they are opened by the pilot pressure(coming from the other line of the circuit).

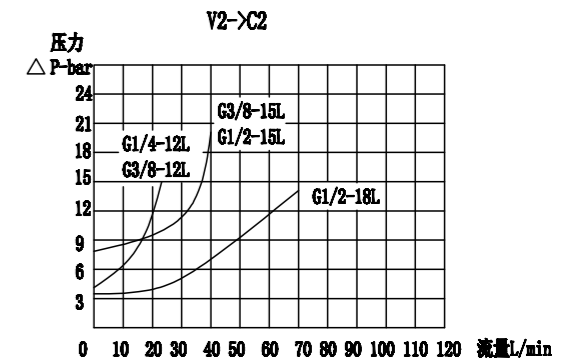
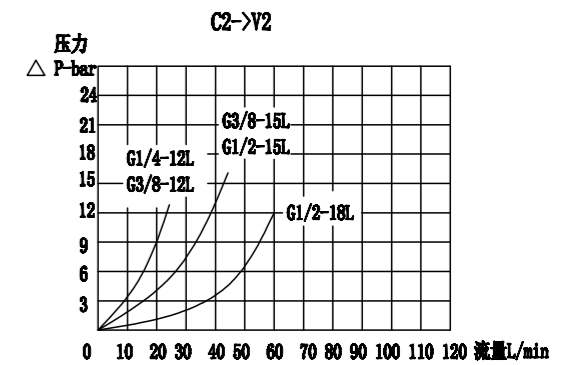
图形符号/SYMBOL:



外形尺寸/OVER DIMENSION:

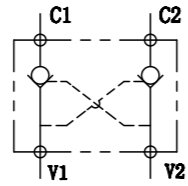


流量曲线图/FLOW DIAGRAM:

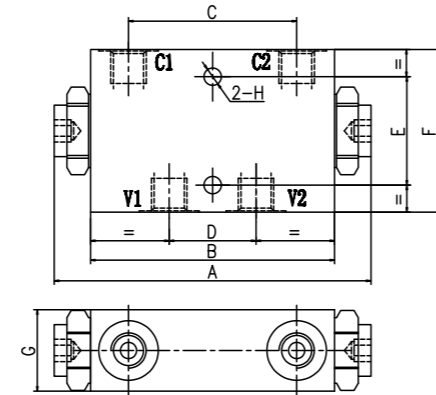




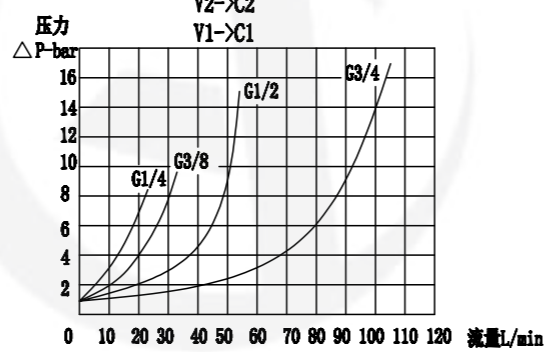
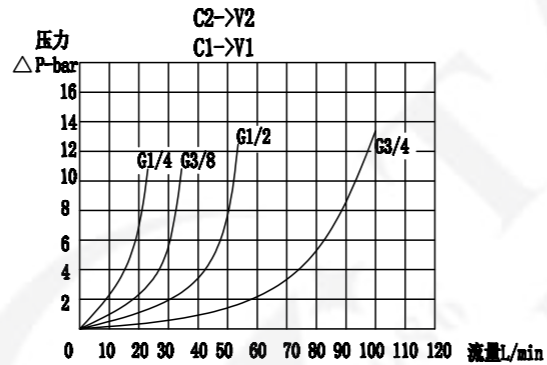
图形符号/SYMBOL:



外形尺寸/OVER DIMENSION:



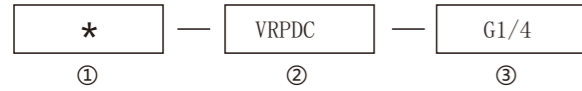
流量曲线图/FLOW DIAGRAM:



技术参数/TECHNICAL DATA:

应用材料/MATERIAL EMPLOYED
 阀体/BODY: 钢/Steel
 阀芯/VALVES: 强化硬质钢/Hardened Steel
 密封/SEALS: 丁腈胶/NBR
 适用工作环境/OPERATIONAL RANGE
 安装/MOUNTING: 按需/as preferred
 温度/TEMPERATURES
 理想工作温度: +40°C ~ +70°C/Ideal operating range between +40°C and +70°C
 最高工作温度: +90°C/Max operating temperature +90°C
 最低/最高环境温度: -20°C ~ +60°C/ Min/Max environment temps -20°C and +60°C

型号说明/MODEL CODE:

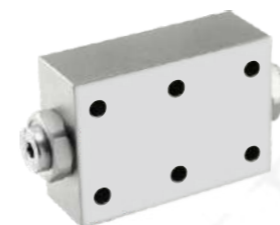


- ①材料/Material: A: 铝/aluminium 空白: 碳钢/Carbon steel
- ②双液控单向阀系列代号/double check valve series code: VRPDC型/VRPDC type
- ③连接螺纹尺寸/connection thread dimension: BBSP

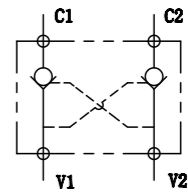
型号 /TYPE	C1-C2 V1-V2	最大流量 (L/min)	最大压力 (bar)		A	B	C	D	E	F	G	H
			钢 /steel	铝 /aluminium								
VRPDC-G1/4	G1/4	20	350	210	117	90	62	30	40	64	30	6.5
VRPDC-G3/8	G3/8	30			117	90	62	30	40	64	30	6.5
VRPDC-G1/2	G1/2	50			129	114	76	38	40	70	35	8.5
VRPDC-G3/4	G3/4	100			154	140	90	46	50	90	44	10.5

应用/APPLICATIONS:

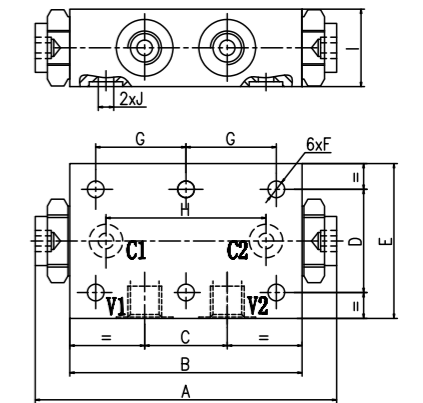
液控单向阀允许一个方向的自由流动(极小的压降); 而反方向则通常是关闭的, 当有来自另一个油路的先导压力方可打开该阀。/The pilot operated check valves allow free flow in a direction (with low pressure drops) and stop it in the opposite direction until they are opened by the pilot pressure (coming from the other line of the circuit).



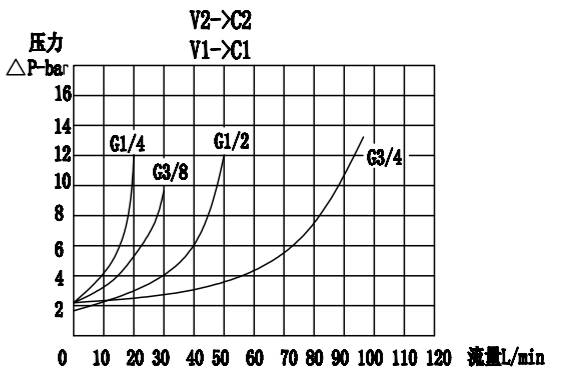
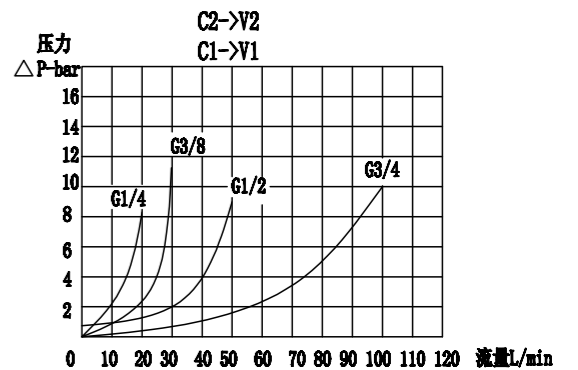
图形符号/SYMBOL:



外形尺寸/OVER DIMENSION:



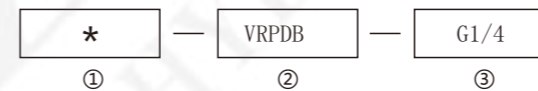
流量曲线图/FLOW DIAGRAM:



技术参数/TECHNICAL DATA:

应用材料/MATERIAL EMPLOYED
 阀体/BODY: 钢/Steel
 阀芯/VALVES: 强化硬质钢/Hardened Steel
 密封/SEALS: 丁腈胶/NBR
 适用工作环境/OPERATIONAL RANGE
 安装/MOUNTING: 按需/as preferred
 温度/TEMPERATURES
 理想工作温度: +40°C ~ +70°C/Ideal operating range between +40°C and +70°C
 最高工作温度: +90°C/Max operating temperature +90°C
 最低/最高环境温度: -20°C ~ +60°C/ Min/Max environment temps -20°C and +60°C

型号说明/MODEL CODE:



- ①材料/Material: A: 铝/aluminium 空白: 碳钢/Carbon steel
- ②双液控单向阀系列代号/single check series code: VRPDB型/VRPDB type
- ③连接螺纹尺寸/connection thread dimension: BBSP

型号 /TYPE	最大流量 (L/min)	最大压力 (bar)		先导比 (pilot ratio)	开启压力 (cracking pressure) (bar)
		钢 /steel	铝 /aluminium		
VRPDB-G1/4	20	350	210	7.1:1	3.5
VRPDB-G3/8	30			7.1:1	3.5
VRPDB-G1/2	50			3.2:1	3.5
VRPDB-G3/4	100			4:1	3.5

型号 /TYPE	C1-C2 V1-V2	A	B	C	D	E	F	G	H	I	J	O-ring
VRPDB-G1/4	G1/4	110	90	32	40	64	Φ6.5	35	62	34	Φ6	9.19x2.62
VRPDB-G3/8	G3/8	110	90	32	40	64	Φ6.5	35	62	34	Φ6	9.19x2.62
VRPDB-G1/2	G1/2	142.5	114	34	40	70	Φ8.5	40	65	35	Φ10	15.54x2.62
VRPDB-G3/4	G3/4	166	140	46	51	83	Φ10.5	48	96	44	Φ14	18.72x2.62

应用/APPLICATIONS:

液控单向阀允许一个方向的自由流动(极小的压降); 而反方向则通常是关闭的, 当有来自另一个油路的先导压力方可打开该阀。/The pilot operated check valves allow free flow in a direction (with low pressure drops) and stop it in the opposite direction until they are opened by the pilot pressure (coming from the other line of the circuit).



技术参数/TECHNICAL DATA:

应用材料/MATERIAL EMPLOYED

管体/BODY: 钢/Steel

阀芯/VALVES: 钢/Steel

适用工作环境/OPERATIONAL RANGE

安装/MOUNTING

按需/as preferred

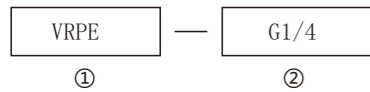
温度/TEMPERATURES

理想工作温度: +40°C ~ +70°C / Ideal operating range between +40°C and +70°C

最高工作温度: +90°C / Max operating temperature +90°C

最低/最高环境温度: -20°C ~ +60°C / Min/Max environment temps -20°C and +60°C

型号说明/MODEL CODE:



① 液控单向阀系列代号/single check series code: VRPE型/VRPE type

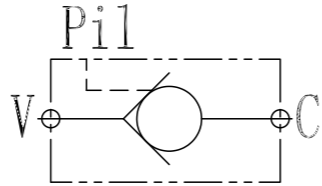
② 连接螺纹尺寸/connection thread dimension: BBSP

型号 /TYPE	A	最大流量 (L/min)	最大压力 (bar)	B	C	Pil	先导比 (pilot ratio)
VRPE-G1/4	G1/4	25	350	102	40	G1/4	1:3.6
VRPE-G3/8	G3/8	40	350	108	41		1:3.2
VRPE-G1/2	G1/2	60	350	120	42		1:2.8
VRPE-G3/4	G3/4	100	300	131	55		1:3.2
VRPE-G1	G1	150	300	170	60		1:6.2

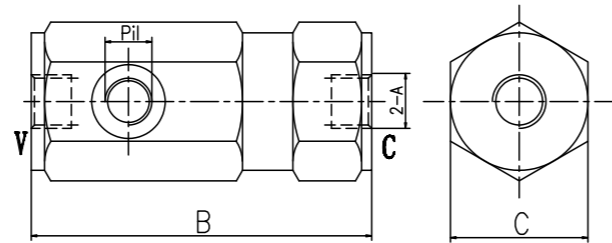
应用/APPLICATIONS:

液控单向阀允许一个方向的自由流动(极小的压降);而反方向则通常是关闭的,当有来自另一个油路的先导压力方可打开该阀。/The pilot operated check valves allow free flow in a direction (with low pressure drops) and stop it in the opposite direction until they are opened by the pilot pressure (coming from the other line of the circuit).

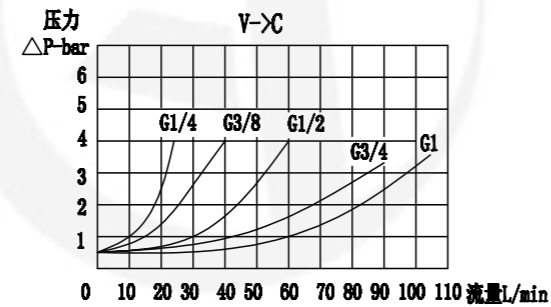
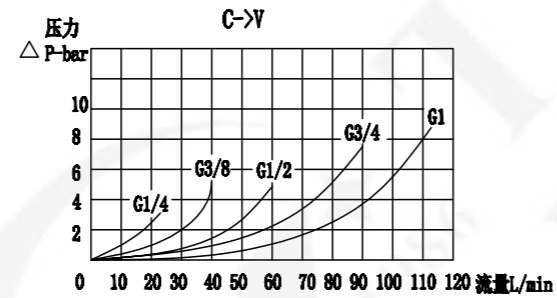
图形符号/SYMBOL:



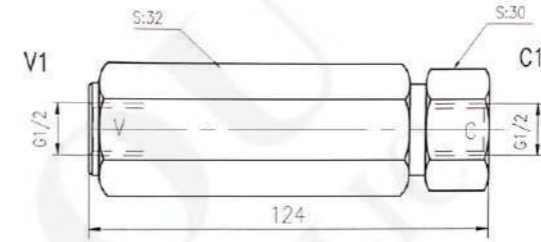
外形尺寸/OVER DIMENSION:



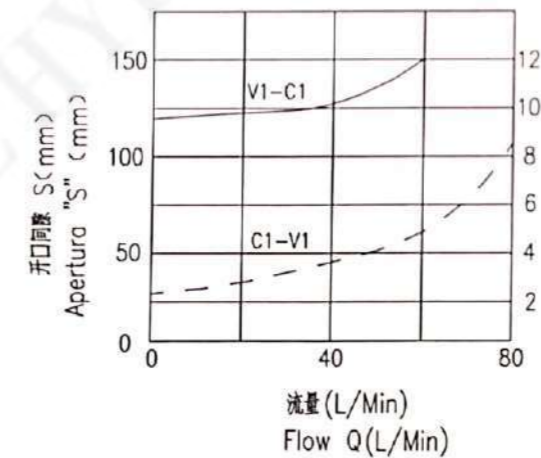
流量曲线图/FLOW DIAGRAM:



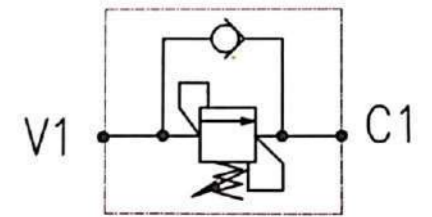
外形尺寸/OVER DIMENSION:



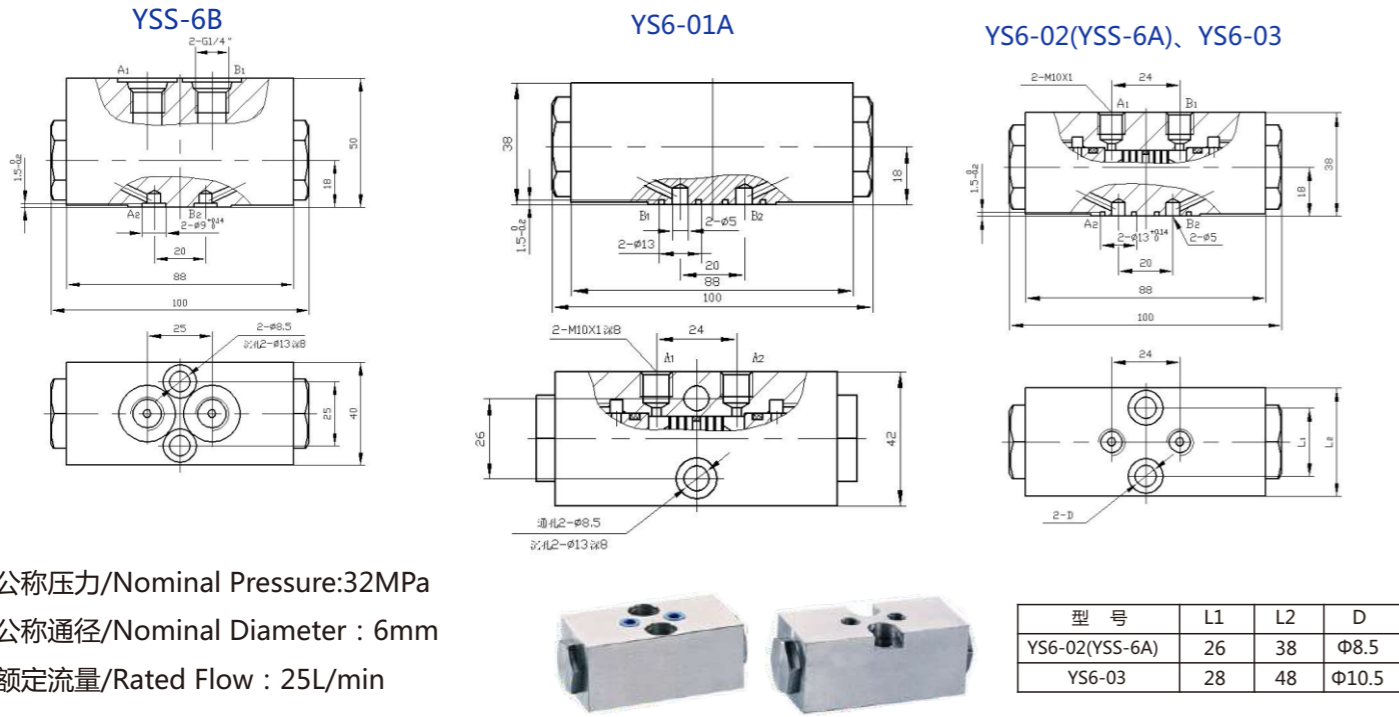
流量曲线图/FLOW DIAGRAM:



图形符号/SYMBOL:



开启压力调压范围 Pressure range (MPa)	标准设定 Standard Setting (MPa)	最高工作压力 Max. working pressure (MPa)	最大流量 Flow Q. max (L/Min)
3-12	8	35	80



型号说明 Ordering Code:

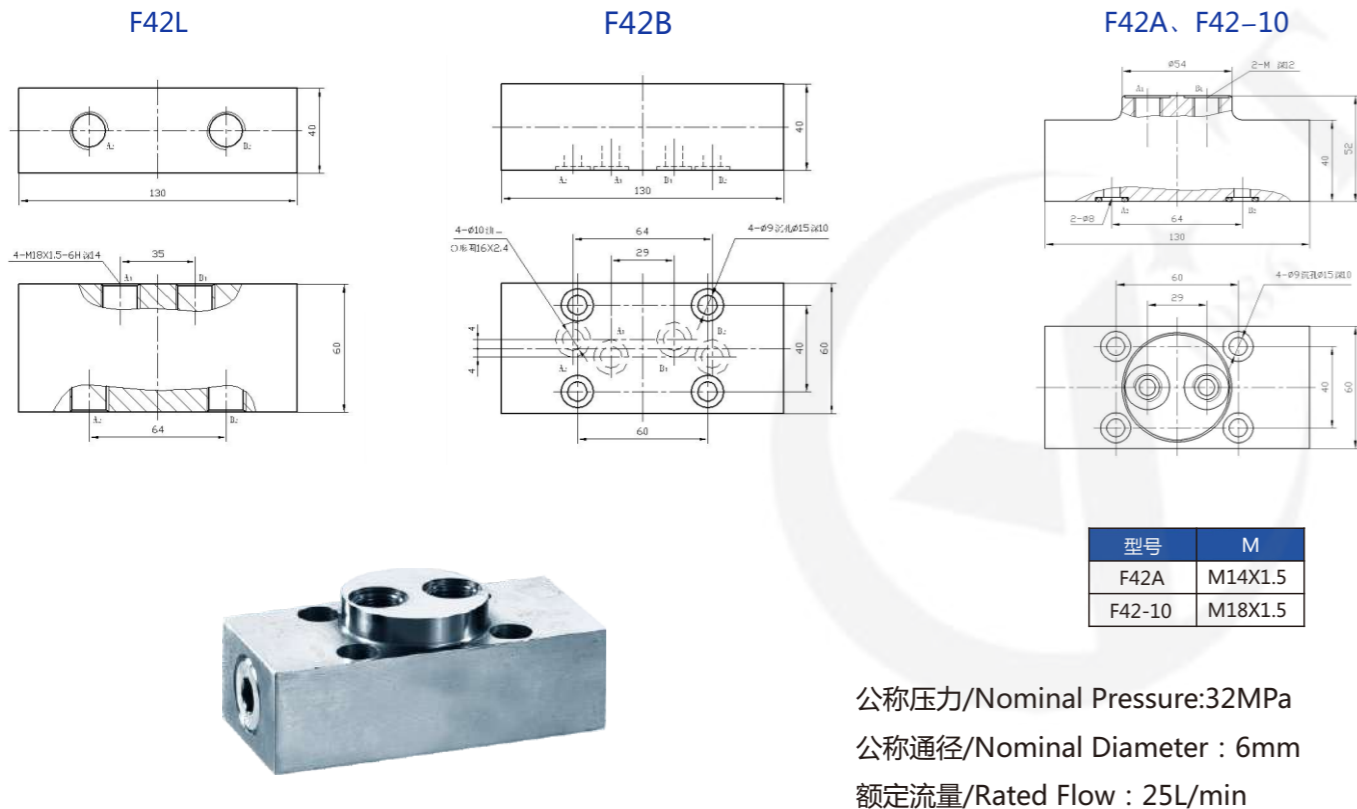
VBSO	SE	6	G	/
------	----	---	---	---

单向=SE
双向=DE

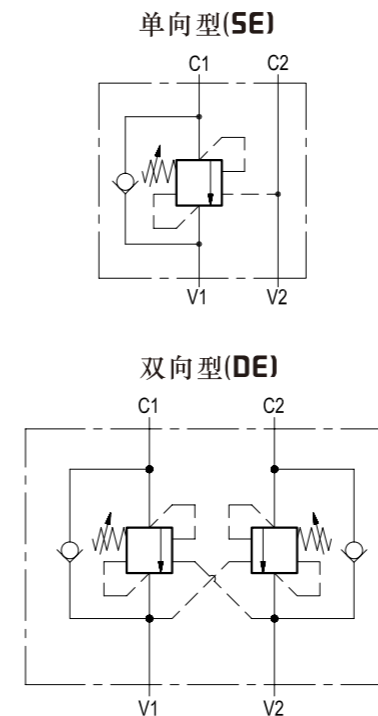
6通径Size =06
10通径Size =10
15通径Size =15
20通径Size =20

英制Linch size=无Blank
公制Metric size =2

管式Subplate mounting =G
板式(一个口)Thread mounting=P1
板式(二个口)Thread mounting=P2
叠加式Modular mounting =M



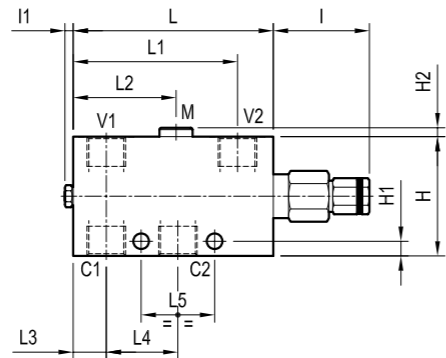
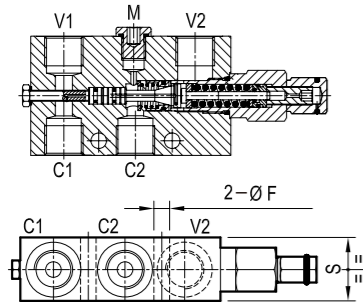
机能符号 Symbols:



技术参数 Specification:

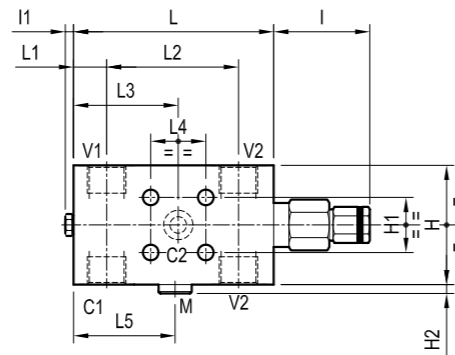
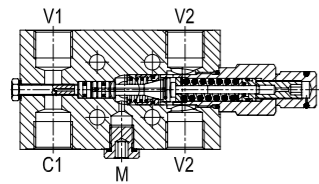
型号 Model	最大压力Mpa Working pressure	最大流量L/min Max.flow rate	面积比 Pilot Ratio
VBSO-*6*	35	30	4.2:1
VBSO-*10*		40	4.2:1
VBSO-*15*	32	60	4.2:1
VBSO-*20*		80	4.2:1

外形尺寸 Dimensions (mm)



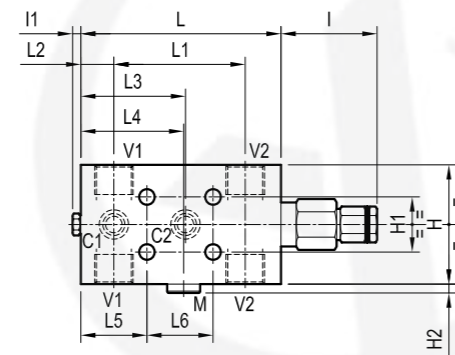
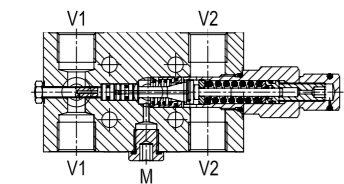
VBSO-SE-*G

MODEL	S	L5	L4	L3	L2	L1	L	l1	l	H2	H1	H	F	Y	Weight (kg)
VBSO-SE-6G	30	40	39.3	18	—	88.3	109	4.5	47.5	5	8	55	8.5	G1/4或M14*1.5	1.33
VBSO-SE-10G	30	40	39.3	18	—	88.3	109	4.5	47.5	5	8	55	8.5	G3/8或M18*1.5	1.33
VBSO-SE-15G	35	40	39.3	18	55.3	89.8	109	4.5	47.5	5	8	65	8.5	G1/2或M22*1.5	1.85



VBSO-SE-*PI

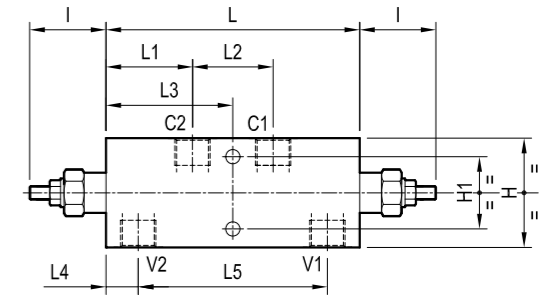
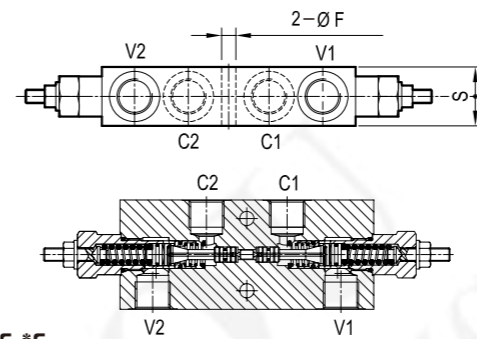
MODEL	S1	S	L5	L4	L3	L2	L1	L	l1	l	H2	H1	H	F	Y	Weight (kg)
VBSO-SE-6P1	15	30	51.7	30	51.7	70.3	20.7	109	4.5	47.5	5	30	55	8.5	G1/4或M14*1.5	1.29
VBSO-SE-10P1	15	29.5	51.7	30	51.7	70.3	20.7	109	4.5	47.5	5	30	55	8.5	G3/8或M18*1.5	1.29
VBSO-SE-15P1	17.5	34.5	53.7	30	52	70.3	19.2	109	4.5	47.5	5	30	65	8.5	G1/2或M22*1.5	1.81



VBSO-SE-*P2

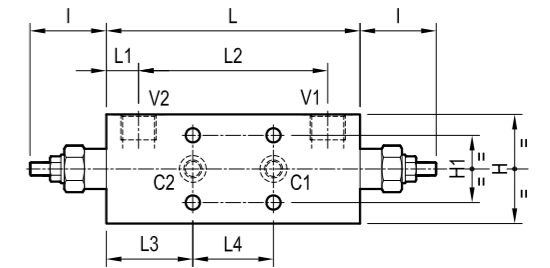
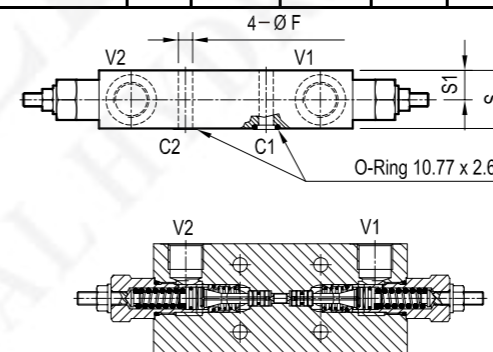
MODEL	S1	S	L6	L5	L4	L3	L2	L1	L	l1	l	H2	H1	H	F	Y	Weight (kg)
VBSO-SE-6P2	15	30	36	36	57	0	18	71.5	109	4.5	47.5	5	30	55	8.5	G1/4或M14*1.5	1.29
VBSO-SE-10P2	15	29.5	36	36	57	0	18	71.5	109	4.5	47.5	5	30	55	8.5	G3/8或M18*1.5	1.29
VBSO-SE-15P2	17.5	34.5	36	36	57.5	56	18	72	109	4.5	47.5	5	30	65	8.5	G1/2或M22*1.5	1.81

外形尺寸 Dimensions (mm)



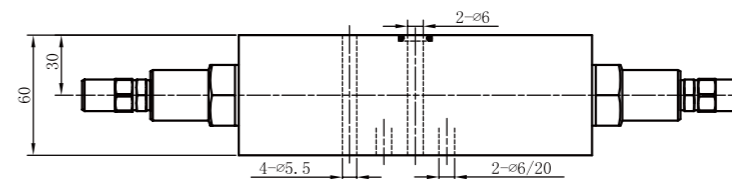
VBSO-DE-*G

MODEL	S	L5	L4	L3	L2	L1	L	l	H1	H	F	Y	Weight (kg)
VBSO-DE-6G	30	109.6	20.7	75.5	47.6	51.7	151	47.5	38	55	8.5	G1/4或M14*1.5	2.5
VBSO-DE-10G	30	109.6	20.7	75.5	47.6	51.7	151	47.5	38	55	8.5	G3/8或M18*1.5	2.5
VBSO-DE-15G	35	112.6	19.2	75.5	47.6	51.7	151	47.5	43	65	8.5	G1/2或M22*1.5	2.9

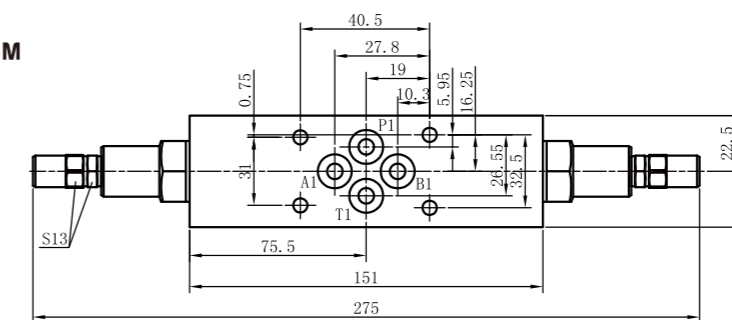


VBSO-DE-*P2

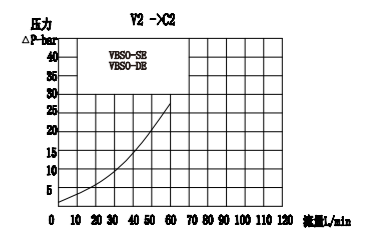
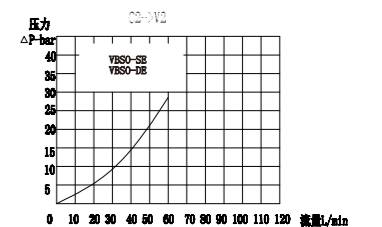
MODEL	S1	S	L4	L3	L2	L1	L	l	H1	H	F	Y	Weight (kg)
VBSO-DE-6P2	15	29.5	48	51.5	110	20.7	151	47.5	40	55	8.5	G1/4或M14*1.5	1.76
VBSO-DE-10P2	15	29.5	48	51.5	110	20.7	151	47.5	40	55	8.5	G3/8或M18*1.5	1.76
VBSO-DE-15P2	18	34.5	48	51.5	113	19.2	151	47.5	40	65	8.5	G1/2或M22*1.5	2.3



VBSO-DE-6M



流量曲线图 / FLOW DIAGRAM





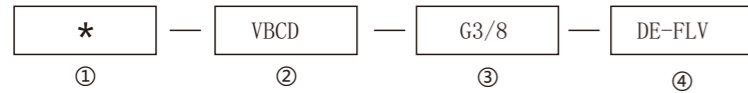
技术参数/TECHNICAL DATA:

应用材料/MATERIAL EMPLOYED
 阀体/BODY: 钢/Steel
 阀芯/VALVES: 强化硬质钢/Hardened Steel
 密封/SEALS: 丁腈胶/NBR

适用工作环境/OPERATIONAL RANGE
 安装/MOUNTING
 按需/as preferred

温度/TEMPERATURES
 理想工作温度: +40°C ~ +70°C/Ideal operating range between +40°C and +70°C
 最高工作温度: +90°C/Max operating temperature +90°C
 最低/最高环境温度: -20°C ~ +60°C/ Min/Max environment temps -20°C and +60°C

型号说明/MODEL CODE:



- ① 材料/Material: A: 铝/aluminum 空白: 碳钢/Carbon steel
- ② 液控平衡阀系列代号/ Overcenter valve series code: VBCD-DE-FLV型/VBCD-DE-FLV type
- ③ 连接螺纹尺寸/connection thread dimension: BBSP
- ④ 双向平衡阀、法兰螺钉连接/double overcenter valve flangeable by screw: DE-FLV

型号 /TYPE	最大流量 (L/min)	最大压力 (bar)		先导比 (plot ratio)	V1-V2 C1-C2
		钢 /steel	铝 /aluminium		
VBCD-G3/8-DE-FLV	40	350	210	4.5:1	G3/8
VBCD-G1/2-DE-FLV	60				G1/2

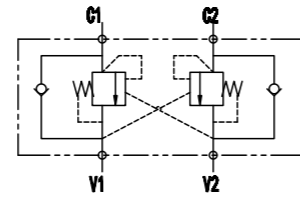
型号/TYPE	L	L1	L2	L3	L4	L5	H1	H	S
VBCD-G3/8-DE-FLV	150	250	110	20	50	12.5	30	70	30
VBCD-G1/2-DE-FLV	150	250	110	20	50	18	32	80	30

应用/APPLICATIONS:

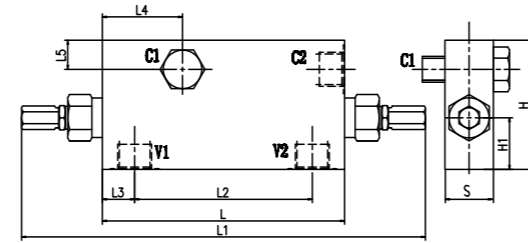
平衡阀是用来控制执行机构在一个方向(单平衡)或两个方向(双平衡)的停止和运动。

The overcenter valves are employed to control the block and the motion of an actuators in one direction(single overcenter valves)or in both the directions(dual overcenter valves)

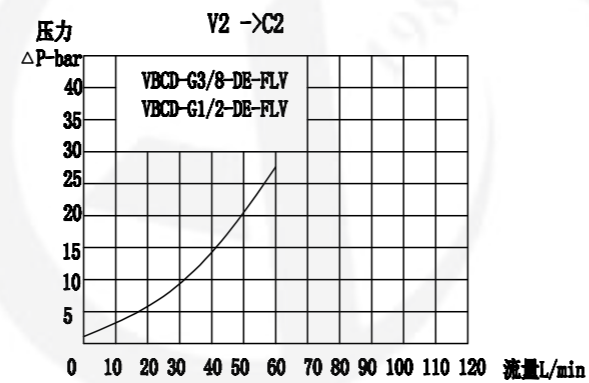
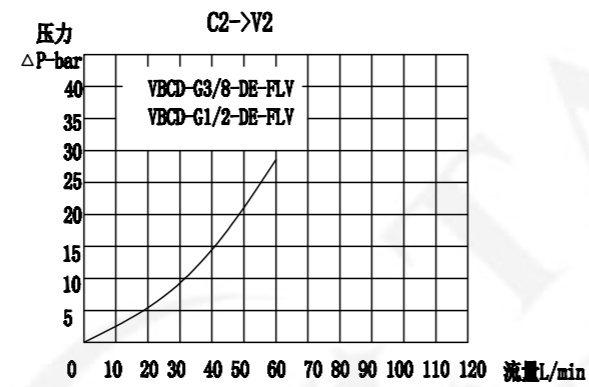
图形符号/SYMBOL:



外形尺寸/OVER DIMENSION:



流量曲线图/FLOW DIAGRAM:



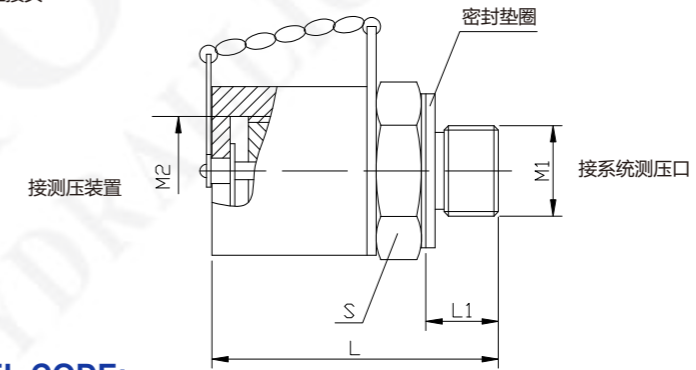
简介:

本测压接头安装于液压系统中需要检测压力的部分,通过测压装置与各种测压仪器、仪表相连接,就可测得该处压力。测量完毕取下测压装置,因有自封功能而不会外漏,故使用本接头,就能够实现液压系统运转过程中,用一套测压装置检测多个部位的的压力。本接头通径3mm,最大工作压力40MPa。



外形尺寸/OVER DIMENSION:

PT和PPT系列垫圈密封测压接头



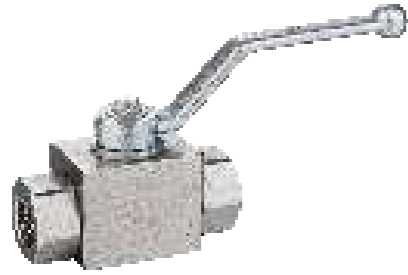
型号说明/MODEL CODE:

PT系列微型测压接头(不带排气)

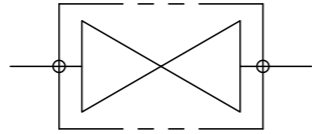
型号	M1	M2	L	L1	S	H
PT-1	M10x1	M12x1.25	33	8	17	H1
PT-2	M10x1	M16	42	8	19	H2
PT-3	M14x1.5	M16	46	12	19	H2
PT-4	M10x1	M16	42	8	19	H2
PT-5	M12x1.5	M16	46	12	19	H2
PT-6	M18x1.5	M16	46	12	24	H2
PT-7	G1/4	M14x1.5	46	12	19	H2
PT-8	M12x1.5	M16x1.5	50	12	17	H3
PT-9	M10x1	M16x1.5	46	11.5	19	H4
PT-10	M12x1.5	M16x1.5	46	11.5	19	H4
PT-11	M14x1.5	M16x1.5	46	11.5	19	H4
PT-12	M18x1.5	M16x1.5	46	11.5	24	H4

PPT系列微型测压接头(带排气)

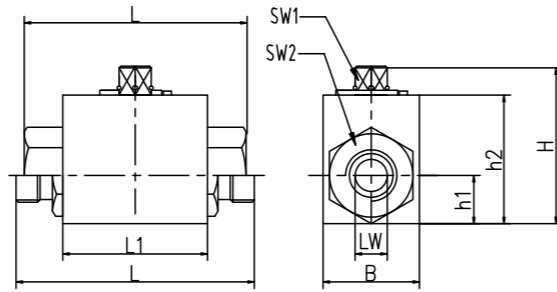
型号	M1	M2	L	L1	S	配测压胶管接头型号
PPT-1	M10x1	M12x1.25	33	8	17	H1
PPT-2	M10x1	M16	42	8	19	H2
PPT-3	M14x1.5	M16	46	12	19	H2
PPT-5	M12x1.5	M16	46	2	19	H2



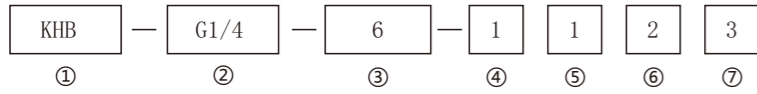
图形符号/SYMBOL:



外形尺寸/OVER DIMENSION:



型号说明/MODEL CODE:



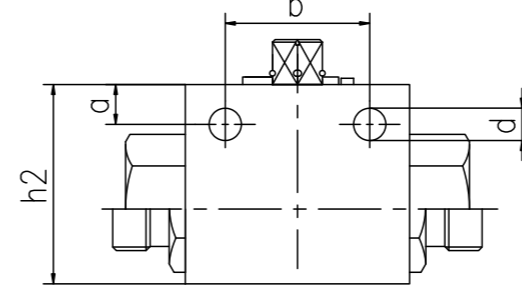
- ① 球阀系列代号/ball valve series code: KHB型/KHB type
- ② 连接螺纹尺寸/connection thread dimension: BBSP, NPT, L, S, JB984-77
- ③ 公称直径/nominal diameter: 4, 6, 8, 10, 13, 16, 20, 25, 32, 40, 50
- ④ 阀体和接头材料/body and joint material:
1、45号钢 2、不锈钢304 3、不锈钢316
- ⑤ 球体和阀杆材料/ball and the valve stem material:
1、45号钢 2、不锈钢304 3、不锈钢316
- ⑥ 球座密封材料/ball sealing material:
2、POM/聚甲醛 3、PTFE/聚四氟乙烯
- ⑦ 阀杆和接头密封材料/valve stem and joint seal material:
2、PTFE/聚四氟乙烯 3、NBR/丁腈橡胶 4、FKM 氟橡胶

连接口略图	型号 /TYPE	最大压力 (bar)	DN (mm)	LW	RA	d1	i	L	L1	B	H	h1	h2	SW1	SW2
	KHB-M16x1.5	500	6	6	11	M16x1.5	11	69	40	26	45	14	33	9	22
	KHB-M22x1.5	500	8	8	16	M22x1.5	12	76	42	32	49	16	36	9	27
	KHB-M27x1.5	500	10	10	20	M27x1.5	12	76	42	32	49	16	36	9	27
	KHB-M30x1.5	400	16	15	24	M30x1.5	13	84	48	38	61	19	45	12	32
	KHB-M36x2	315	20	20	30	M36x2	15	103	60	48	70	25	55	14	41
	KHB-M42x2	315	25	25	35	M42x2	18	116	65	57	79	29	64	14	50
	KHB-M52x2	315	32	30	40	M52x2	20	149	84	75	101	38	84	17	60
	KHB-M60x2	315	40	38	45	M60x2	22	174	91	85	112	42	95	17	70
	KHB-G1/8	500	4	6	-	G1/8	14	69	40	25	45	14	33	9	22
	KHB-G1/4	500	6	6	-	G1/4	14	69	40	25	45	14	33	9	22
	KHB-G3/8	500	10	10	-	G3/8	14	72	42	32	49	16	36	9	27
	KHB-G1/2	500	13	12	-	G1/2	14	83	47	35	49	18	38	9	30
	KHB-G1/2	400	16	15	-	G1/2	16	83	48	38	61	19	45	9	32
	KHB-G3/4	315	20	20	-	G3/4	18	95	60	48	70	25	55	12	41
	KHB-G1	315	25	25	-	G1	21	113	65	57	79	29	64	12	50
	KHB-G1 1/4	315	32	32	-	G1 1/4	22	110	84	75	101	38	84	14	60
	KHB-G1 1/2	315	40	38	-	G1 1/2	24	130	91	85	112	43	95	14	70
	KHB-G2	315	50	48	-	G2	26	140	100	104	131	52	113	14	90

连接口略图	型号 /TYPE	最大压力 (bar)	DN (mm)	LW	RA	d1	i	L	L1	B	H	h1	h2	SW1	SW2
	KHB-06LR	500	4	4	6	M12x1.5	10	67	40	26	45	14	33	9	22
	KHB-08LR	500	6	6	8	M14x1.5	10	67	40	26	45	14	33	9	22
	KHB-10LR	500	8	8	10	M16x1.5	11	74	42	32	49	16	36	9	27
	KHB-12LR	500	10	10	12	M18x1.5	11	74	42	32	49	16	36	9	27
	KHB-15LR	500	13	12	15	M22x1.5	13	82	47	35	53	18	38	9	30
	KHB-15LR	500	12	12	15	M22x1.5	12	82	48	38	61	19	45	9	32
	KHB-18LR	500	13	12	18	M26x1.5	13	82	47	35	53	18	38	9	30
	KHB-18LR	400	16	15	18	M26x1.5	12	82	48	38	61	19	45	9	32
	KHB-22LR	315	20	19	22	M30x2	14	101	60	48	70	25	55	9	41
	KHB-28LR	315	25	25	28	M36x2	14	108	65	57	79	29	64	12	50
	KHB-35LR	315	32	30	35	M45x2	16	141	84	75	101	38	84	14	60
	KHB-42LR	315	40	36	42	M52x2	16	162	91	85	112	43	95	14	70
	KHB-08SR	500	4	5	8	M16x1.5	12	73	40	26	45	14	33	9	22
	KHB-10SR	500	6	6	10	M18x1.5	12	73	40	26	45	14	33	9	22
	KHB-12SR	500	8	8	12	M20x1.5	12	76	42	32	49	16	36	9	27
	KHB-14SR	500	10	10	14	M22x1.5	14	80	42	32	49	16	36	9	27
	KHB-16SR	500	13	12	16	M24x1.5	14	86	47	35	53	18	38	9	30
	KHB-16SR	500	12	12	16	M24x1.5	14	86	48	38	61	19	45	9	32
	KHB-20SR	500	13	13	20	M30x2	16	90	47	35	53	18	38	9	30
	KHB-20SR	400	16	15	20	M30x2	16	90	48	38	61	19	45	9	32
	KHB-25SR	315	20	20	25	M36x2	18	109	60	48	70	25	55	12	41
	KHB-30SR	315	25	25	30	M42x2	20	120	65	57	79	29	64	12	50
KHB-38SR	315	32	30	38	M52x2	22	153	84	75	101	38	84	14	60	
	KHB-NPT1/8	500	4	6	-	NPT1/8	11	69	35	26	45	14	33	9	22
	KHB-NPT1/4	500	6	6	-	NPT1/4	11	69	35	26	45	14	33	9	22
	KHB-NPT3/8	500	10	10	-	NPT3/8	11	72	42	32	49	16	36	9	27
	KHB-NPT1/2	500	13	12	-	NPT1/2	14	83	47	35	49	18	38	9	30
	KHB-NPT1/2	400	16	15	-	NPT1/2	14	83	48	38	61	19	45	9	32
	KHB-NPT3/4	315	20	20	-	NPT3/4	18	95	60	48	70	25	55	12	41
	KHB-NPT1	315	25	25	-	NPT1	21	113	65	57	79	29	64	12	50
	KHB-NPT1 1/4	315	32	32	-	NPT1 1/4	22	110	84	75	101	38	84	14	60
	KHB-NPT1 1/2	315	40	38	-	NPT1 1/2	24	130	91	85	112	43	95	14	70
KHB-NPT2	315	50	48	-	NPT2	26	140	100	104	131	52	113	14	90	

VH2V

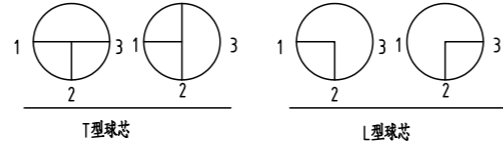
侧面通孔定位图



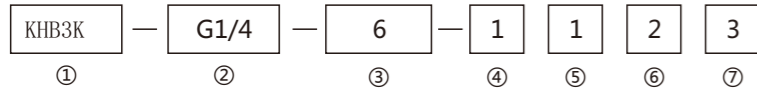
DN	h2	b	a	d
4-8	3	26	5	4.5
10	36	32	5	6.5
13	38	37.5	4.8	6.5
16	46	37.5	5	6.5
20	5	45	6.5	6.5
25	60	55	6	6.5



图形符号/SYMBOL:

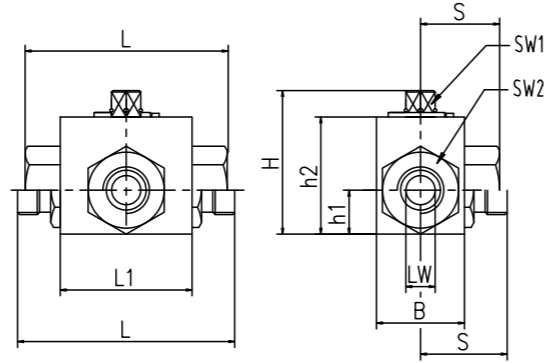


型号说明/MODEL CODE:



- ① 球阀系列代号/ball valve series code: KHB3K型/KHB3K type
- ② 连接螺纹尺寸/connection thread dimension: BBSP、NPT、L、S、JB984-77
- ③ 公称通径/nominal diameter: 4、6、8、10、13、16、20、25、32、40、50
- ④ 阀体和接头材料/body and joint material:
1、45号钢 2、不锈钢304 3、不锈钢316
- ⑤ 球体和阀杆材料/ball and the valve stem material:
1、45号钢 2、不锈钢304 3、不锈钢316
- ⑥ 球座密封材料/ball sealing material:
2、POM/聚甲醛 3、PTFE/聚四氟乙烯
- ⑦ 阀杆和接头密封材料/valve stem and joint seal material:
2、PTFE/聚四氟乙烯 3、NBR/丁腈橡胶 4、FKM 氟橡胶

外形尺寸/OVER DIMENSION:

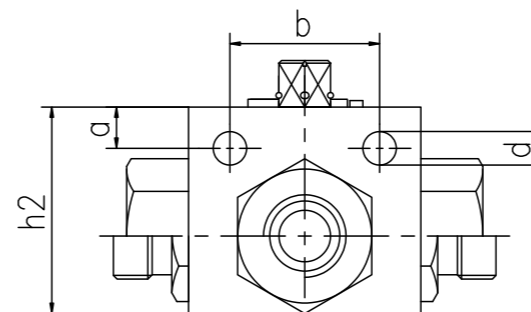


连接口略图	型号 /TYPE	最大压力 (bar)	DN (mm)	LW	RA	d1	i	L	L1	B	H	h1	h2	SW1	SW2	S
	KHB3K-M16x1.5	500	6	6	11	M16x1.5	11	69	40	26	45	14	33	9	22	27.5
	KHB3K-M22x1.5	500	8	8	16	M22x1.5	12	76	42	32	49	16	36	9	27	33
	KHB3K-M27x1.5	500	10	10	20	M27x1.5	12	76	42	32	49	16	36	9	27	33
	KHB3K-M30x1.5	400	16	15	24	M30x1.5	13	84	48	38	61	19	45	12	32	37
	KHB3K-M36x2	315	20	20	30	M36x2	15	103	60	48	70	25	55	14	41	45.5
	KHB3K-M42x2	315	25	25	35	M42x2	18	116	65	57	79	29	64	14	50	54
	KHB3K-M52x2	315	32	30	40	M52x2	20	149	84	75	101	38	84	17	60	62.5
	KHB3K-M60x2	315	40	38	45	M60x2	22	174	91	85	112	42	95	17	70	84
		KHB3K-G1/8	500	4	6	-	G1/8	14	69	40	25	45	14	33	9	22
KHB3K-G1/4		500	6	6	-	G1/4	14	69	40	25	45	14	33	9	22	34.5
KHB3K-G3/8		500	10	10	-	G3/8	14	72	42	32	49	16	36	9	27	36
KHB3K-G1/2		500	13	12	-	G1/2	14	83	47	35	49	18	38	9	30	40
KHB3K-G1/2		400	16	15	-	G1/2	16	83	48	38	61	19	45	9	32	42
KHB3K-G3/4		315	20	20	-	G3/4	18	95	60	48	70	25	55	12	41	49
KHB3K-G1		315	25	25	-	G1	21	113	65	57	79	29	64	12	50	56.5
KHB3K-G1 1/4		315	32	32	-	G1 1/4	22	110	84	75	101	38	84	14	60	62.5
KHB3K-G1 1/2		315	40	38	-	G1 1/2	24	130	91	85	112	43	95	14	70	61
KHB3K-G2		315	50	48	-	G2	26	140	100	104	131	52	113	14	90	66

连接口略图	型号 /TYPE	最大压力 (bar)	DN (mm)	LW	RA	d1	i	L	L1	B	H	h1	h2	SW1	SW2	S	
	KHB3K-06LR	500	4	4	6	M12x1.5	10	67	40	26	45	14	33	9	22	34.5	
	KHB3K-08LR	500	6	6	8	M14x1.5	10	67	40	26	45	14	33	9	22	34.5	
	KHB3K-10LR	500	8	8	10	M16x1.5	11	74	42	32	49	16	36	9	27	36	
	KHB3K-12LR	500	10	10	12	M18x1.5	11	74	42	32	49	16	36	9	27	36	
	KHB3K-15LR	500	13	12	15	M22x1.5	13	82	47	35	53	18	38	9	30	40	
	KHB3K-15LR	500	12	12	15	M22x1.5	12	82	48	38	61	19	45	9	32	40	
	KHB3K-18LR	500	13	12	18	M26x1.5	13	82	47	35	53	18	38	9	30	42	
	KHB3K-18LR	400	16	15	18	M26x1.5	12	82	48	38	61	19	45	9	32	42	
	KHB3K-22LR	315	20	19	22	M30x2	14	101	60	48	70	25	55	9	41	49	
	KHB3K-28LR	315	25	25	28	M36x2	14	108	65	57	79	29	64	12	50	54	
	KHB3K-35LR	315	32	30	35	M45x2	16	141	84	75	101	38	84	14	60	66	
	KHB3K-42LR	315	40	36	42	M52x2	16	162	91	85	112	43	95	14	70	78	
		KHB3K-08SR	500	4	5	8	M16x1.5	12	73	40	26	45	14	33	9	22	34.5
		KHB3K-10SR	500	6	6	10	M18x1.5	12	73	40	26	45	14	33	9	22	34.5
KHB3K-12SR		500	8	8	12	M20x1.5	12	76	42	32	49	16	36	9	27	36	
KHB3K-14SR		500	10	10	14	M22x1.5	14	80	42	32	49	16	36	9	27	36	
KHB3K-16SR		500	13	12	16	M24x1.5	14	86	47	35	53	18	38	9	30	44	
KHB3K-16SR		500	12	12	16	M24x1.5	14	86	48	38	61	19	45	9	32	37	
KHB3K-20SR		500	13	13	20	M30x2	16	90	47	35	53	18	38	9	30	44	
KHB3K-20SR		400	16	15	20	M30x2	16	90	48	38	61	19	45	9	32	37	
KHB3K-25SR		315	20	20	25	M36x2	18	109	60	48	70	25	55	12	41	49	
KHB3K-30SR		315	25	25	30	M42x2	20	120	65	57	79	29	64	12	50	60	
	KHB3K-NPT1/8	500	4	6	-	NPT1/8	11	69	35	26	45	14	33	9	22	34.5	
	KHB3K-NPT1/4	500	6	6	-	NPT1/4	11	69	35	26	45	14	33	9	22	34.5	
	KHB3K-NPT3/8	500	10	10	-	NPT3/8	11	72	42	32	49	16	36	9	27	36	
	KHB3K-NPT1/2	500	13	12	-	NPT1/2	14	83	47	35	49	18	38	9	30	40	
	KHB3K-NPT1/2	400	16	15	-	NPT1/2	14	83	48	38	61	19	45	9	32	42	
	KHB3K-NPT3/4	315	20	20	-	NPT3/4	18	95	60	48	70	25	55	12	41	49	
	KHB3K-NPT1	315	25	25	-	NPT1	21	113	65	57	79	29	64	12	50	56.5	
	KHB3K-NPT1 1/4	315	32	32	-	NPT1 1/4	22	110	84	75	101	38	84	14	60	66	
	KHB3K-NPT1 1/2	315	40	38	-	NPT1 1/2	24	130	91	85	112	43	95	14	70	61	
	KHB3K-NPT2	315	50	48	-	NPT2	26	140	100	104	113	53	113	14	90	62.5	

VH3V

通孔定位图



DN	h2	b	a	d
4-8	33	26	5	4.5
10	38	32	5	6.5
13	40	37.5	4.8	6.5
16	46	37.5	5	6.5
20	57	45	6.5	6.5
25	60	55	6	6.5

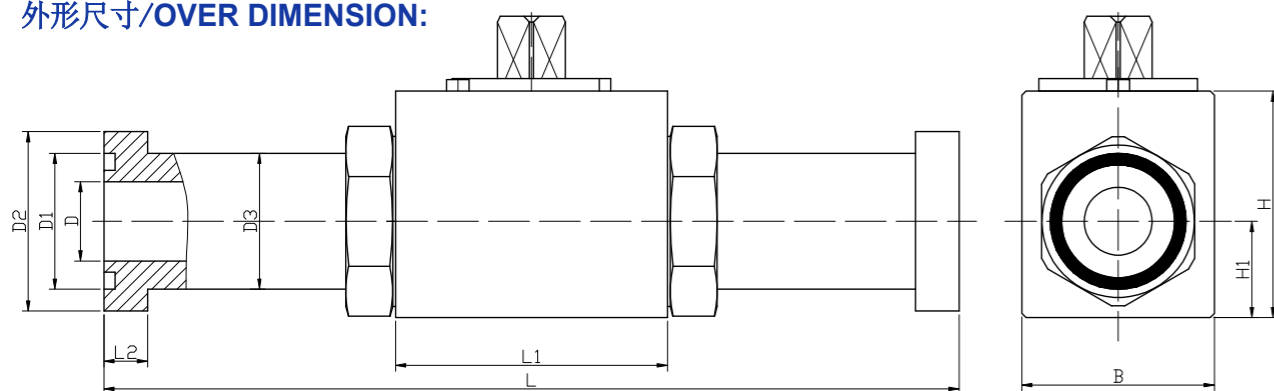
型号说明/MODEL CODE:



- ① 名称代号：阀块形球阀
- ② 公称口径：13-50mm
- ③ 连接形式：F3-(3000Psi)SAE法兰连接 / F6-(6000Psi)SAE法兰连接
- ④ 阀体接头材料：1-碳钢 / 2-不锈钢
球体球锁材料：1-碳钢 / 2-不锈钢
球体处密封材料：1-POM / 2-聚四氟乙烯 / 3-PEEK
接头和球锁密封材料：1-丁晴橡胶 / 2-氟橡胶
手柄形式：1-锌合金曲柄 / 2-钢质曲柄
- ⑤ 表面处理：1-镀锌 / 2-镀黄铜



外形尺寸/OVER DIMENSION:



SAE3000psi

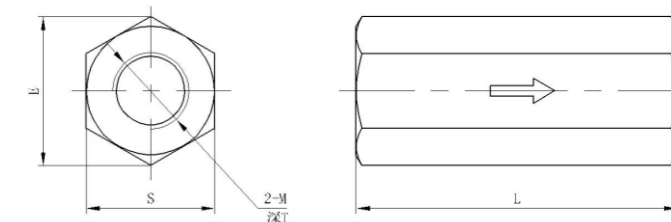
型号	法兰规格	DN	D	D1	D2	D3	L	L1	L2	B	H	H1
KHB-13-F3	1/2"	13	13	25	30.2	24	151	48	6.7	34	40	17
KHB-20-F3	3/4"	20	19	32	38.1	32	162	60	6.7	48	56	24
KHB-25-F3	1"	25	24	40	44.4	38	178	64	8	58	63	29
KHB-32-F3	1 1/4"	32	30	45	50.8	43	190.5	72	8	68	75	34
KHB-40-F3	1 1/2"	40	38	55	60.3	50	231	80	8	80	86	40
KHB-50-F3	2"	50	46	63	71.4	62	232	96	9.5	96	102	48

SAE6000psi

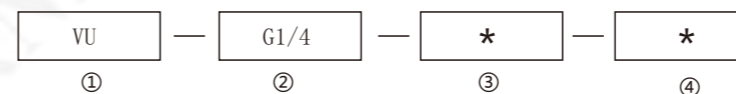
型号	法兰规格	DN	D	D1	D2	D3	L	L1	L2	B	H	H1
KHB-13-F6	1/2"	13	13	25	31.7	24	151	48	7.7	34	40	17
KHB-20-F6	3/4"	20	19	32	41.3	32	174	60	8.8	48	56	24
KHB-25-F6	1"	25	24	40	47.6	38	198	64	9.5	58	63	29
KHB-32-F6	1 1/4"	32	30	45	54	44	223	72	10.3	68	75	34
KHB-40-F6	1 1/2"	40	38	55	63.5	51	281	80	12.6	80	86	40
KHB-50-F6	2"	50	46	63	79.4	67	316	96	12.6	96	102	48

S单向阀
SCHECKVALVE

通径	型号	尺寸 (mm)				
		L	E	S	T	M
06	S-06A*/1	58	22	19	12	M14×1.5
	G 1/4"					
08	S-08A*/1	58	28	24	12	M18×1.5
	G 3/8"					
10	S-10A*/1	72	34.5	30	14	M22×1.5
	G 1/2"					
15	S-15A*/1	85	41.5	36	16	M27×2
	G 3/4"					
20	S-20A*/1	98	53	46	18	M33×2
	G 1"					
25	S-25A*/1	120	69	60	20	M42×2
	G 1 1/4"					
30	S-30A*/1	132	75	65	22	M48×2
	G 1 1/2"					



型号说明/MODEL CODE:



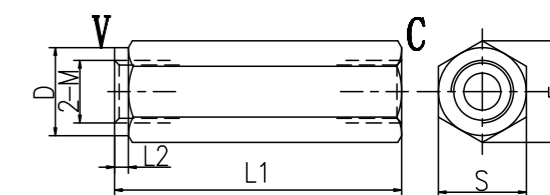
- ① 单向阀系列代号/check valve series code: VU直通型/VU through-type
- ② 连接螺纹尺寸/connection thread dimension: 1=BBSP、2=NPTF
- ③ 开启压力/opening pressure: 0=不装弹簧/Without thread 0.5=0.5bar 1.5=1.5bar 3=3bar 5=5bar
- ④ 表面处理/Surface treatment: 1=三价铬/Trivalent chromium

VU单向阀
VUCHECKVALVE

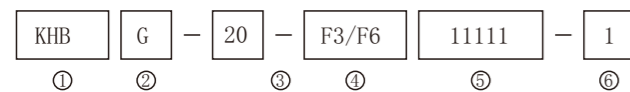


型号 /TYPE	DN (mm)	最大流量 (L/min)	PN (Bar)	尺寸 /DIMENSION				
				L1	L2	E	S	D
VU-G1/4-*	8	30	500	62	3	21.5	19	19
VU-G3/8-*	10	45	500	68	3	27.5	24	24
VU-G1/2-*	12	70	500	77	3	34.5	30	30
VU-G3/4-*	16	110	400	88	3	41.5	36	36
VU-G1-*	20	160	350	105	3	47	41	41
VU-G1 1/4-*	25	210	350	130	3	63	55	55
VU-G1 1/2-*	30	320	350	138	3	75	65	65
VU-G2-*	40	460	250	160	3	92	80	80

外形尺寸/OVER DIMENSION:



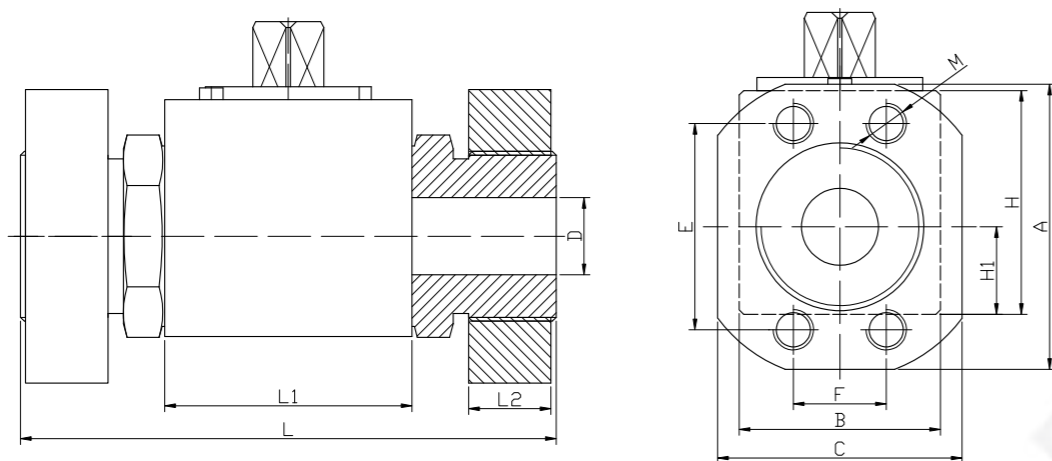
型号说明/MODEL CODE:



- ① 名称代号：阀球形球阀
- ② 接头和法兰连接：G-螺纹连接式
- ③ 公称口径：15-65mm
- ④ 连接形式：F3-(3000Psi)SAE法兰连接 / F6-(6000Psi)SAE法兰连接
- ⑤ 阀体接头材料：1-碳钢 / 2-不锈钢
球体球锁材料：1-碳钢 / 2-不锈钢
球体处密封材料：1-POM / 2-聚四氟乙烯 / 3-PEEK
接头和球锁密封材料：1-丁腈橡胶 / 2-氟橡胶
手柄形式：1-锌合金曲柄 / 2-钢质曲柄
- ⑥ 表面处理：1-镀锌



外形尺寸/OVER DIMENSION:



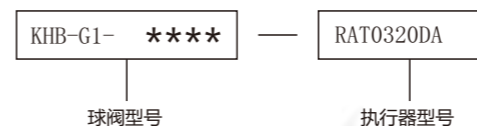
SAE3000psi (210bar)

型号	法兰规格	DN	D	L	L1	L2	E	F	B	H	A	C	H1	M
KHBG-15-F3	1/2"	15	15	104	48	15	38.1	17.5	38	46	54	46	19	M8
KHBG-20-F3	3/4"	20	19	121	60	18	47.6	22.3	48	56	65	52	24	M10
KHBG-25-F3	1"	25	24	133	64	18	52.4	26.2	58	63	70	59	29	M10
KHBG-32-F3	1 1/4"	32	30	163	72	18	58.7	30.2	68	75	79	73	34	M10
KHBG-40-F3	1 1/2"	40	38	168	80	18	69.9	35.7	80	86	94	83	40	M12
KHBG-50-F3	2"	50	46	186	96	25	77.8	42.9	96	102	102	97	48	M12
KHBG-65/50-F3	2 1/2"	50	46	174	96	26	88.9	50.8	96	102	114	109	48	M12

SAE6000psi (420bar)

型号	法兰规格	DN	D	L	L1	L2	E	F	B	H	A	C	H1	M
KHBG-15-F6	1/2"	15	15	104	48	16	40.5	18.2	38	46	56	48	19	M8
KHBG-20-F6	3/4"	20	19	121	60	18	50.8	23.8	48	56	71	60	24	M10
KHBG-25-F6	1"	25	24	133	64	24	57.2	27.8	58	63	81	70	29	M10
KHBG-32-F6	1 1/4"	32	30	163	72	26	66.6	31.8	68	75	95	78	34	M10
KHBG-40-F6	1 1/2"	40	38	168	80	28	79.3	36.5	80	86	113	95	40	M12
KHBG-50-F6	2"	50	46	186	96	30	96.8	44.5	96	102	133	114	48	M12

型号说明/MODEL CODE:

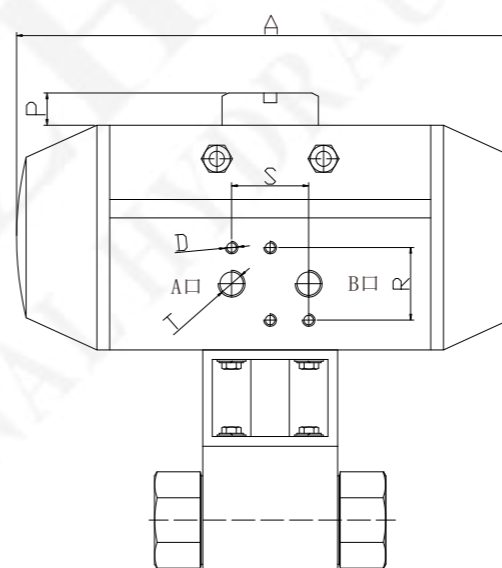


气动球阀简介:

气动球阀是采用气动执行器来驱动球阀,实现自动或远程(弹簧复位)两种,利用4-8Bar的压缩气体推动活塞来控制执行器控制目的。气动执行器采用双活塞齿条和齿轮传动技术,分双作用和单作用的工作。



外形尺寸/OVER DIMENSION:



气动执行器的工作原理:

- 1.双作用执行器：压缩空气从A口输入，并从B口排空，执行器内双活塞在压缩空气的作用下分开同时利用齿条和齿轮的传动带动中心轴逆时针方向转动，进而将球阀打开；如果从B口输入，并从A口排空，所有的动作与之相反，执行器将球阀关闭。
- 2.弹簧复位单作用执行器：压缩空气从A口输入，并从B口排空，执行器内双活塞在压缩空气的作用下克服弹簧压力和外界阻力分开，同时利用齿条和齿轮的传动带动中心轴逆时针方向转动，进而将球阀打开；如果A口和B口同时排空，活塞就会在弹簧的作用下复位，并带动中心轴顺时针的方向转动，将球阀关闭。

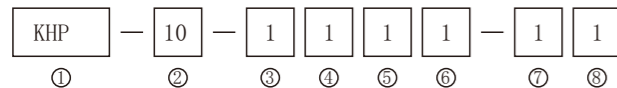
可选配置:

阀位指示器、二位五通和二位三通执行器专用电磁阀、消音器。

气动球阀执行器选型表

双作用气动执行器	扭矩Nm (气压5bar)	球阀通径	A	P	R	S	T	D
RAT032DA	7.5	DN4-5	109	20	32	24	G1/4	M5x8
RAT052DA	20.8	DN6-8	163.5	25.5	32	24	G1/4	M5x8
RAT063DA	36.6	DN10-13	181	30.4	32	24	G1/4	M5x8
RAT075DA	58.8	DN16-20	207	25.5	32	24	G1/4	M5x8
RAT092DA	113.7	DN25	258	25.5	32	24	G1/4	M5x8
RAT105DA	169.7	DN32	287	25.5	32	24	G1/4	M5x8
RAT125DA	291.5	DN40	312.5	25.6	32	24	G1/4	M5x8
RAT140DA	438.7	DN50-80	411	25.7	32	24	G1/4	M5x8
RAT160DA	668.5	DN100	488	25.8	32	24	G1/4	M5x8

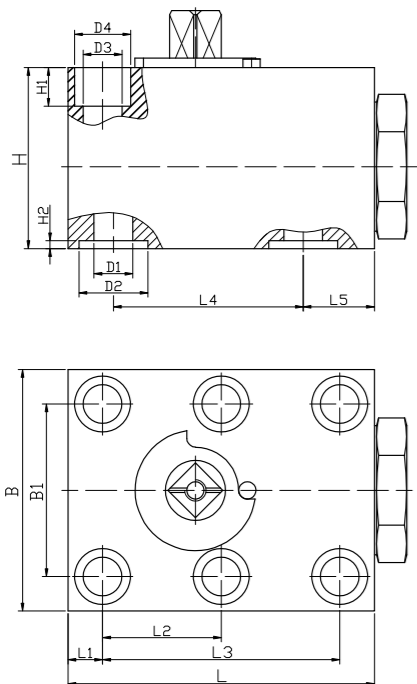
型号说明/MODEL CODE:



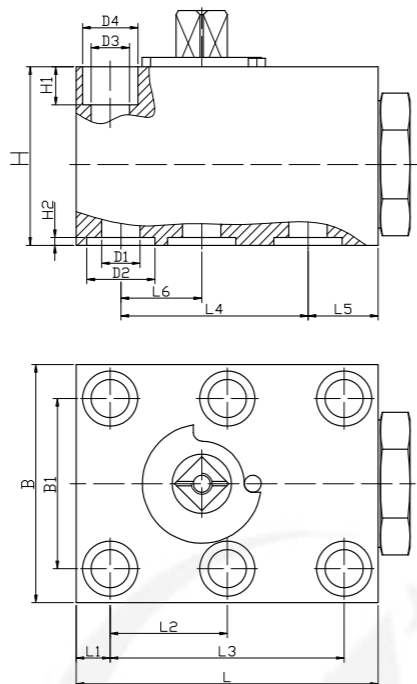
- ① 名称代号: KHP-板式二通球阀 / KHP3K-板式三通球阀
- ② 公称口径: 6-50mm
- ③ 阀体材料: 1-碳钢 / 2-不锈钢
- ④ 球体球锁材料: 1-碳钢 / 2-不锈钢
- ⑤ 球体处密封材料: 1-POM / 2-聚四氟乙烯 / 3-PEEK
- ⑥ 接头和球锁密封材料: 1-丁晴橡胶 / 2-氟橡胶
- ⑦ 手柄形式: 1-锌合金曲柄 / 2-钢质曲柄
- ⑧ 表面处理: 1-镀锌 / 2-镀黄锌 / 3-镀铬

外形尺寸/OVER DIMENSION:

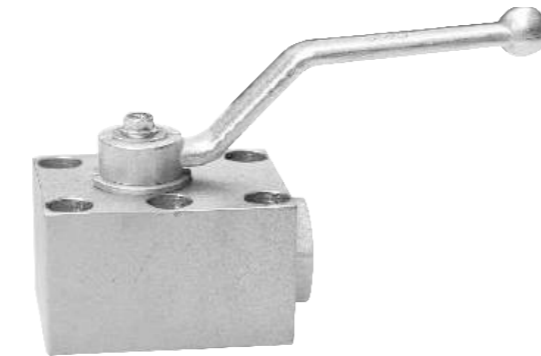
二通板式球阀



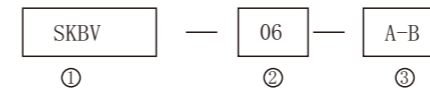
三通板式球阀



型号	DN (mm)	基本尺寸 (mm)															
		L	L1	L2	L3	L4	L5	L6	D1	D2	D3	D4	B	B1	H	H1	H2
KHP-06	06	59	8.5	17.5	35	35	15.5	17.5	6	11	6	11	42	27	38	7	1.3
KHP-10	10	71	8	27.5	55	44	16.5	19	10	16	9	13	56	40	42	9	1.8
KHP-16	16	100	8.5	41.5	83	58	25	26.5	15	25	9	13	63	45	50	9	1.8
KHP-20	20	117	10	48.5	97	69	28	32	19	30	11	16.5	71	51	60	10.5	2
KHP-25	25	137	11	57.5	115	81	31	38	24	35	11	16.5	82	60	67	10.5	2
KHP-32	32	165	12	68	136	96	40	46	30	40	13	19	102	78	75	13	2.4
KHP-40	40	180	28.5	56	112	112	39.5	56	38	50	17	26	130	95	86	17	2.4
KHP-50	50	220	38	68	136	136	46	68	46	56	22	33	150	112	105	22	2.7

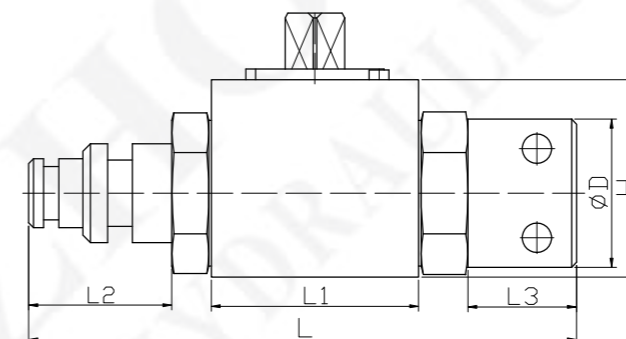


型号说明/MODEL CODE:

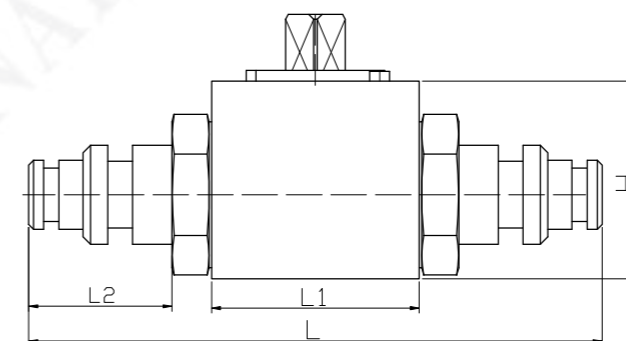


- ① 球阀代号: 矿用球阀
- ② 公称口径: 06-32mm
- ③ 连接形式: A-A / A-B / B-B

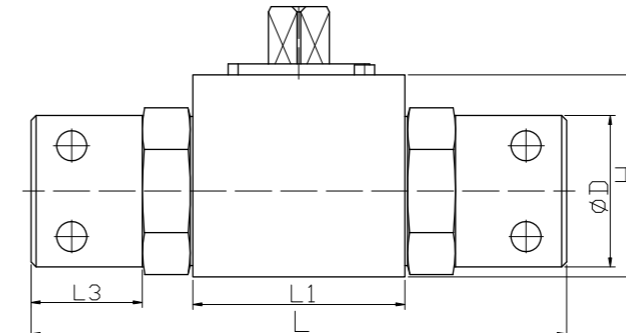
A-B



A-A



B-B



型号	DN (mm)	PN (bar)	L	L1	L2	L3	D	H
SKBV-06-AB	06	500	104	40	28	24	24	32
SKBV-10-AB	10	500	111	42	29	24	30	40
SKBV-12-AB	13	500	112	48	29	25	35	40
SKBV-20-AB	20	315	125	60	29	23	41	56
SKBV-25-AB	25	315	144	64	35	28	53	63
SKBV-32-AB	32	315	167	72	35	24	60	75

型号	DN (mm)	PN (bar)	L	L1	L2	L3	D	H
SKBV-06-AA	06	500	109	40	28	—	—	32
SKBV-10-AA	10	500	116	42	29	—	—	40
SKBV-12-AA	13	500	116	48	29	—	—	40
SKBV-20-AA	20	315	131	60	29	—	—	56
SKBV-25-AA	25	315	151	64	35	—	—	63
SKBV-32-AA	32	315	178	72	35	—	—	75

型号	DN (mm)	PN (bar)	L	L1	L2	L3	D	H
SKBV-06-BB	06	500	99	40	—	24	24	32
SKBV-10-BB	10	500	106	42	—	24	30	40
SKBV-12-BB	13	500	108	48	—	25	35	40
SKBV-20-BB	20	315	119	60	—	23	41	56
SKBV-25-BB	25	315	137	64	—	28	53	63
SKBV-32-BB	32	315	156	72	—	24	60	75



技术参数/TECHNICAL DATA:

应用材料/MATERIAL EMPLOYED

阀体/BODY: 钢/Steel

阀芯/VALVES: 钢/Steel

适用工作环境/OPERATIONAL RANGE

安装/MOUNTING

按需/as preferred

温度/TEMPERATURES

理想工作温度: +40°C ~ +70°C/Ideal operating range between +40°C and +70°C

最高工作温度: +90°C/Max operating temperature +90°C

最低/最高环境温度: -20°C ~ +60°C/ Min/Max environment temps -20°C and +60°C

型号说明/MODEL CODE:



① 材料/Material: SS: 不锈钢/Stainless steel 空白: 碳钢/Carbon steel

② 梭阀系列代号/shuttle valve series code: VUSF型/VUSF type

③ 连接螺纹尺寸/connection thread dimension: BBSP

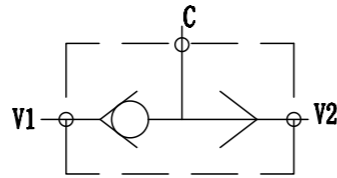
型号 /TYPE	最大压力 (bar)	最大流量 (L/min)	DN (mm)	L	L1	C	D	E	F	G	I	J	SW
VUSF-G1/4	350	20	6	48	36	25	35	22.5	7.5	G1/4	25	5.5	22
VUSF-G3/8	350	45	10	59	45	30	45	30	8	G3/8	29	6.5	27
VUSF-G1/2	350	80	13	90	57	35	50	32.5	8.5	G1/2	36	6.5	32
VUSF-G3/4	350	110	20	113	62	45	60	37	6.5	G3/4	50	8.5	41
VUSF-G1	350	150	25	120	80	50	80	54.5	11	G1	60	10.5	46

应用/APPLICATIONS:

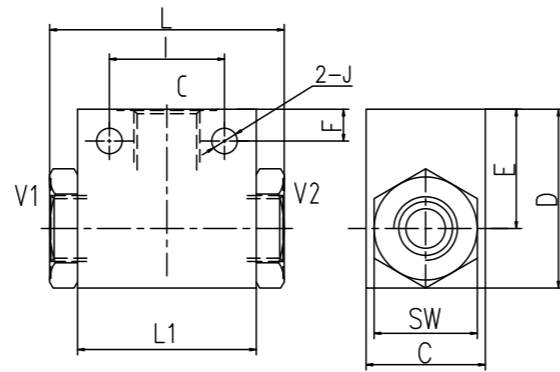
梭阀相当于两个单向阀组合的阀,其作用相当于“或门”。这是一种三通阀,它比较来自油路V1和V2的两路输入压力信号,然后将其中的高压信号通过X口引出。

/The shuttle valve is equivalent to two check valve combination valve, and its role is equivalent to "OR gate". There are 3 ways valves, which detect the higher pressure signal between 2 input signal.

图形符号/SYMBOL:



外形尺寸/OVER DIMENSION:



技术参数/TECHNICAL DATA:

应用材料/MATERIAL EMPLOYED

阀体/BODY: 钢/Steel

阀芯/VALVES: 强化硬质钢/Hardened Steel

密封/SEALS: 丁腈胶/NBR

适用工作环境/OPERATIONAL RANGE

安装/MOUNTING

按需/as preferred

温度/TEMPERATURES

理想工作温度: +40°C ~ +70°C/Ideal operating range between +40°C and +70°C

最高工作温度: +90°C/Max operating temperature +90°C

最低/最高环境温度: -20°C ~ +60°C/ Min/Max environment temps -20°C and +60°C

型号说明/MODEL CODE:



① 材料/Material: SS: 不锈钢/Stainless steel 空白: 碳钢/Carbon steel

② 节流阀系列代号/Bidirectional flow control valves series code: VURF型/VURF type

③ 连接螺纹尺寸/connection thread dimension: BBSP

型号 /TYPE	D	最大流量 (L/min)	最大压力 (bar)	A	B	开启压力 (cracking pressure)(bar)
VURF-G1/4	G1/4	12	320	62	21	0.5
VURF-G3/8	G3/8	30	320	78	26	0.5
VURF-G1/2	G1/2	50	320	80	30	0.5
VURF-G3/4	G3/4	85	280	100	36	0.5
VURF-G1	G1	120	250	118	41	0.5

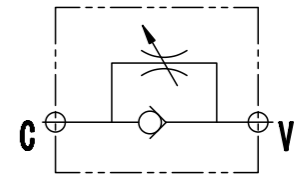
注:D处连接螺纹可以根据客户的要求来进行设计

NOTE:D can be designed according to customer requirements

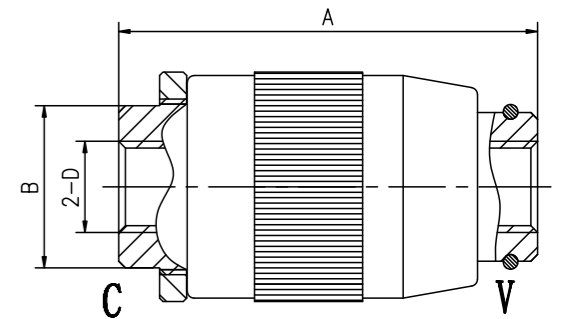
应用/APPLICATIONS:

节流阀在进油口和出油口之间可产生压降。该阀没有压力补偿,因而调节流量可以改变压力和液压油粘度的关系。/The flow restrictor valves are able to produce a pressure drop between inlet and outlet.They are not pressure compensated so the regulated flow can change in function of the pressure and of the viscosity.

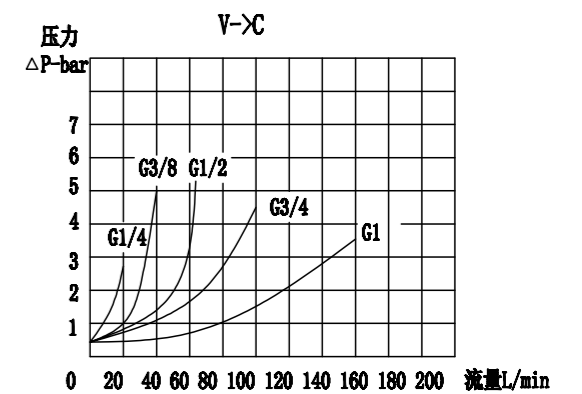
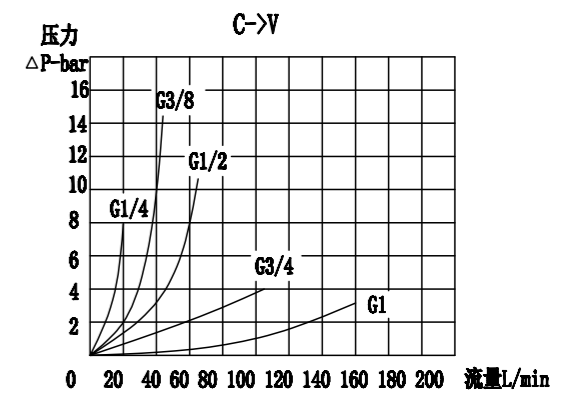
图形符号/SYMBOL:



外形尺寸/OVER DIMENSION:



流量曲线图/FLOW DIAGRAM:





技术参数/TECHNICAL DATA:

应用材料/MATERIAL EMPLOYED
 阀体/BODY: 钢/Steel
 阀芯/VALVES: 强化硬质钢/Hardened Steel
 密封/SEALS: 丁腈胶/NBR
 适用工作环境/OPERATIONAL RANGE
 安装/MOUNTING
 按需/as preferred
 温度/TEMPERATURES
 理想工作温度: +40°C ~ +70°C/Ideal operating range between +40°C and +70°C
 最高工作温度: +90°C/Max operating temperature +90°C
 最低/最高环境温度: -20°C ~ +60°C/ Min/Max environment temps -20°C and +60°C

型号说明/MODEL CODE:



- ① 材料/Material: SS: 不锈钢/Stainless steel 空白: 碳钢/Carbon steel
- ② 节流阀系列代号/Bidirectional flow control valves series code: VBRF型/VBRF type
- ③ 连接螺纹尺寸/connection thread dimension: BBSP

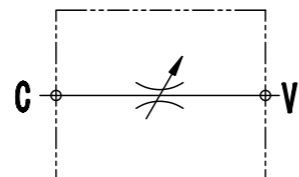
型号 /TYPE	D	最大流量 (L/min)	最大压力 (bar)	A	B
VBRF-G1/4	G1/4	12	320	62	21
VBRF-G3/8	G3/8	30	320	78	26
VBRF-G1/2	G1/2	50	320	80	30
VBRF-G3/4	G3/4	85	280	100	36
VBRF-G1	G1	120	250	118	41

注:D处连接螺纹可以根据客户的要求来进行设计
 NOTE:D can be designed according to customer requirements

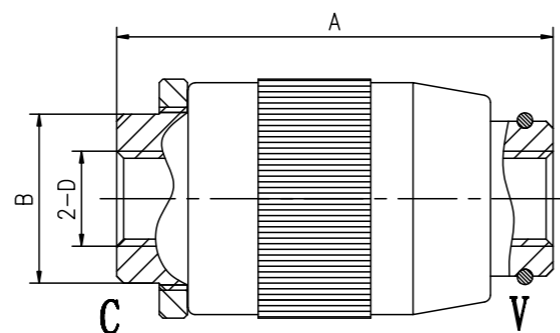
应用/APPLICATIONS:

节流阀在进油口和出油口之间可产生压降。该阀没有压力补偿,因而调节流量可以改变压力和液压油粘度的关系。/The flow restrictor valves are able to produce a pressure drop between inlet and outlet.They are not pressure compensated so the regulated flow can change in function of the pressure and of the viscosity.

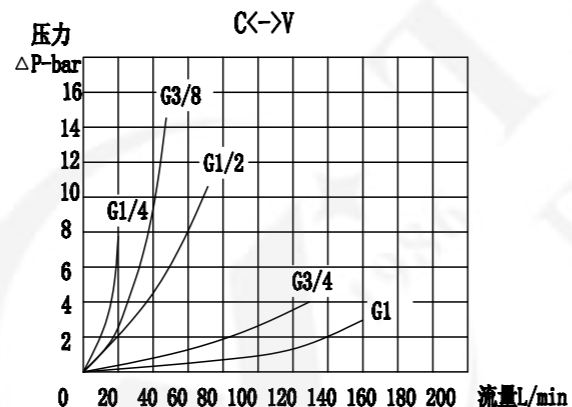
图形符号/SYMBOL:



外形尺寸/OVER DIMENSION:



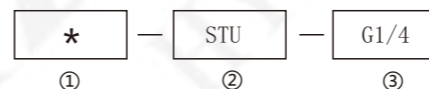
流量曲线图/FLOW DIAGRAM:



技术参数/TECHNICAL DATA:

应用材料/MATERIAL EMPLOYED
 阀体/BODY: 钢/Steel
 阀芯/VALVES: 强化硬质钢/Hardened Steel
 密封/SEALS: 丁腈胶/NBR
 适用工作环境/OPERATIONAL RANGE
 安装/MOUNTING
 按需/as preferred
 温度/TEMPERATURES
 理想工作温度: +40°C ~ +70°C/Ideal operating range between +40°C and +70°C
 最高工作温度: +90°C/Max operating temperature +90°C
 最低/最高环境温度: -20°C ~ +60°C/ Min/Max environment temps -20°C and +60°C

型号说明/MODEL CODE:



- ① 材料/Material: SS: 不锈钢/Stainless steel 空白: 碳钢/Carbon steel
- ② 节流阀系列代号/Bidirectional flow control valves series code: STU型/STU type
- ③ 连接螺纹尺寸/connection thread dimension: BBSP

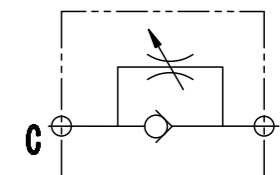
型号 /TYPE	C	最大流量 (L/min)	最大压力 (bar)	A	B	D	E	F	G	H
STU-G1/4	G1/4	12	400	73	72	32	20	M20x1	5	7
STU-G3/8	G3/8	30	400	82	80	32	25	M25x1.5	9	7
STU-G1/2	G1/2	50	400	98	92	45	30	M30x1.5	9	9
STU-G3/4	G3/4	85	400	112	100	45	40	M35x1.5	10	11
STU-G1	G1	150	320	142	122	45	45	M40x1.5	12	15

注: 1)F*处压紧螺母需另行订购。2)C处连接螺纹可以根据客户的要求来进行设计
 Note: 1) The impacted nut at F should be purchased by another way.
 2) C can be designed according to customer requirements

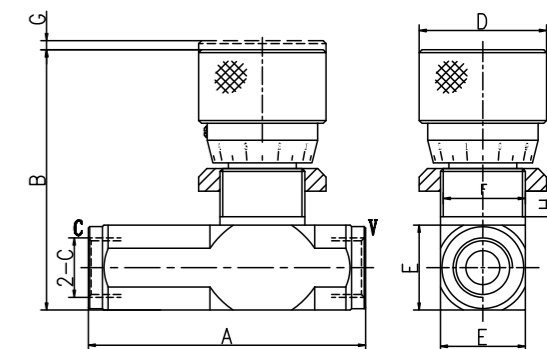
应用/APPLICATIONS:

节流阀在进油口和出油口之间可产生压降。该阀没有压力补偿,因而调节流量可以改变压力和液压油粘度的关系。/The flow restrictor valves are able to produce a pressure drop between inlet and outlet.They are not pressure compensated so the regulated flow can change in function of the pressure and of the viscosity.

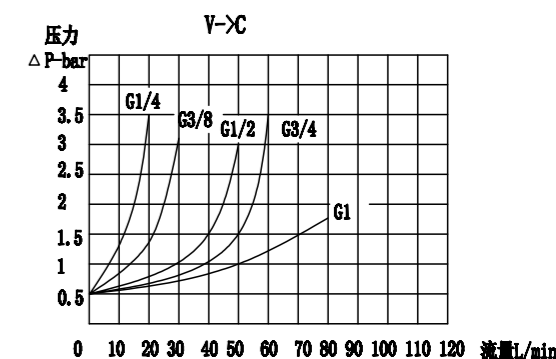
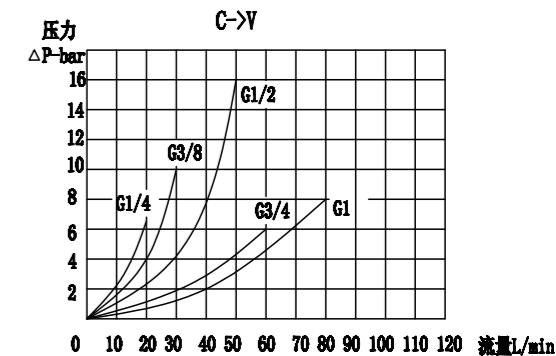
图形符号/SYMBOL:



外形尺寸/OVER DIMENSION:



流量曲线图/FLOW DIAGRAM:





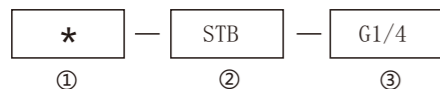
技术参数/TECHNICAL DATA:

应用材料/MATERIAL EMPLOYED
阀体/BODY: 钢/Steel
阀芯/VALVES: 强化硬质钢/Hardened Steel
密封/SEALS: 丁腈胶/NBR

适用工作环境/OPERATIONAL RANGE
安装/MOUNTING
按需/as preferred

温度/TEMPERATURES
理想工作温度: +40°C ~ +70°C/Ideal operating range between +40°C and +70°C
最高工作温度: +90°C/Max operating temperature +90°C
最低/最高环境温度: -20°C ~ +60°C/ Min/Max environment temps -20°C and +60°C

型号说明/MODEL CODE:



- ① 材料/Material: SS: 不锈钢/Stainless steel 空白: 碳钢/Carbon steel
- ② 节流阀系列代号/Bidirectional flow control valves series code: STB型/STB type
- ③ 连接螺纹尺寸/connection thread dimension: BBSP、NPT、UNF

型号 /TYPE	C	最大流量 (L/min)	最大压力 (bar)	A	B	D	E	F	G	H
STB-G1/4	G1/4	12	400	54	72	32	20	M20x1	5	7
STB-G3/8	G3/8	30	400	62	80	32	25	M25x1.5	9	7
STB-G1/2	G1/2	50	400	73	92	45	30	M30x1.5	9	9
STB-G3/4	G3/4	85	400	84	100	45	40	M35x1.5	10	11
STB-G1	G1	150	320	102	122	45	45	M40x1.5	12	15

注: 1) F*处压紧螺母需另行订购。2) C处连接螺纹可以根据客户的要求来进行设计
Note: 1) The impacted nut at F should be purchased by another way.
2) C can be designed according to customer requirements

应用/APPLICATIONS:

节流阀在进油口和出油口之间可产生压降。该阀没有压力补偿, 因而调节流量可以改变压力和液压油粘度的关系。/The flow restrictor valves are able to produce a pressure drop between inlet and outlet. They are not pressure compensated so the regulated flow can change in function of the pressure and of the viscosity.



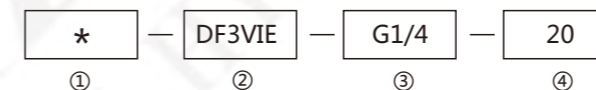
技术参数/TECHNICAL DATA:

应用材料/MATERIAL EMPLOYED
阀体/BODY: 钢/Steel
阀芯/VALVES: 强化硬质钢/Hardened Steel
密封/SEALS: 丁腈胶/NBR

适用工作环境/OPERATIONAL RANGE
安装/MOUNTING
按需/as preferred

温度/TEMPERATURES
理想工作温度: +40°C ~ +70°C/Ideal operating range between +40°C and +70°C
最高工作温度: +90°C/Max operating temperature +90°C
最低/最高环境温度: -20°C ~ +60°C/ Min/Max environment temps -20°C and +60°C

型号说明/MODEL CODE:



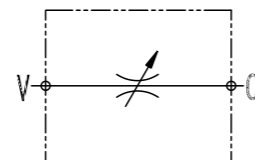
- ① 材料/Material: A: 铝/aluminium 空白: 碳钢/Carbon steel
- ② 转阀系列代号/diverter valves series code: DF3VIE型/DF3VIE type
- ③ 连接螺纹尺寸/connection thread dimension: BBSP
- ④ 流量代号/flow code: 20、35、60、10、180

型号 /TYPE	最大流量 (L/min)	最大压力 (bar)	B/A/P	A	B	C	E	F	ΦG	H	L	LW	N	Q	ΦR	ΦS	SW
DF3VIE-G1/4	20	500	G1/4	33	15	55	16	49	62	110	15.5	6	26	10	8.5	13.5	9
DF3VIE-G3/8	35	500	G3/8	38	17.5	55	16	54	62	110	15.5	8	26	10	8.5	13.5	9
DF3VIE-G1/2	60	500	G1/2	43	20	60	16	59	67	110	17	11	32	11	10.5	13.5	9
DF3VIE-G3/4	100	500	G3/4	48	22.5	75	20.5	68.5	82	180	21	12	32	14	10.5	16.5	14
DF3VIE-G1	180	500	G1	53	25	85	20.5	73.5	97	180	21	16	32	14	10.5	16.5	14

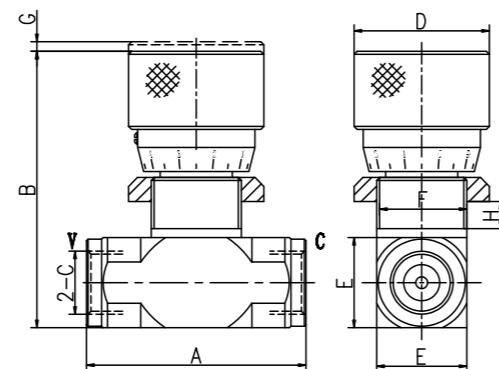
应用/APPLICATIONS:

连接P到压力流量A和P的液压回路, 当手柄杆在位置1中的时候, P和A端口相连; 当手柄的杆位于中心位置时候, P, A和B都连接 (开放中心) /Connect P to the pressure flow, A and P to the ports of the hydraulic circuit where flow has to be diverted. With lever in position 1 the flow is connected towards port A; With lever in central position ports P, A and B are all connected (open center)

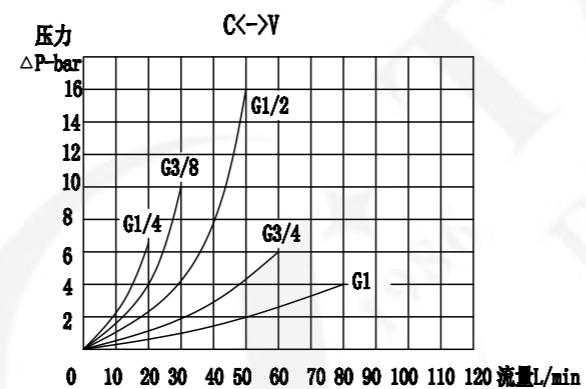
图形符号/SYMBOL:



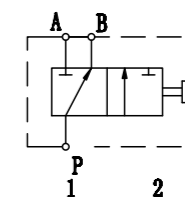
外形尺寸/OVER DIMENSION:



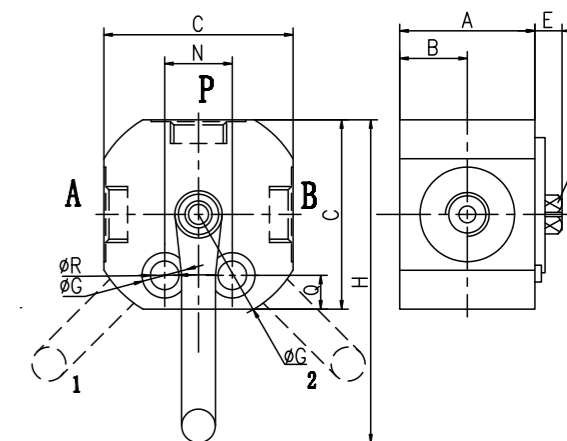
流量曲线图/FLOW DIAGRAM:



图形符号/SYMBOL:



外形尺寸/OVER DIMENSION:





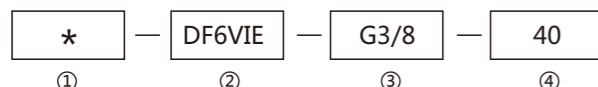
技术参数/TECHNICAL DATA:

应用材料/MATERIAL EMPLOYED
阀体/BODY: 钢/Steel
阀芯/VALVES: 强化硬质钢/Hardened Steel
密封/SEALS: 丁腈胶/NBR

适用工作环境/OPERATIONAL RANGE
安装/MOUNTING
按需/as preferred

温度/TEMPERATURES
理想工作温度: +40°C ~ +70°C/Ideal operating range between +40°C and +70°C
最高工作温度: +90°C/Max operating temperature +90°C
最低/最高环境温度: -20°C ~ +60°C/Min/Max environment temps -20°C and +60°C

型号说明/MODEL CODE:



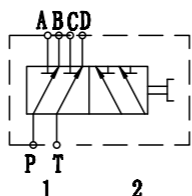
- ① 材料/Material: A: 铝/aluminium 空白: 碳钢/Carbon steel
- ② 转阀系列代号/diverter valves series code: DF6VIE型/DF6VIE type
- ③ 连接螺纹尺寸/connection thread dimension: BBSP
- ④ 流量代号/flow code: 40、60

型号 /TYPE	最大流量 (L/min)	最大压力 (bar)	A (B) C (D) P (T)	L	L3	L4	ΦD	H	H1	G
DF6VIE-G3/8	40	300	G3/8	55	32	25	47	74	96	M8
DF6VIE-G1/2	60	300	G1/2	60	37	27	47	83	105	M8

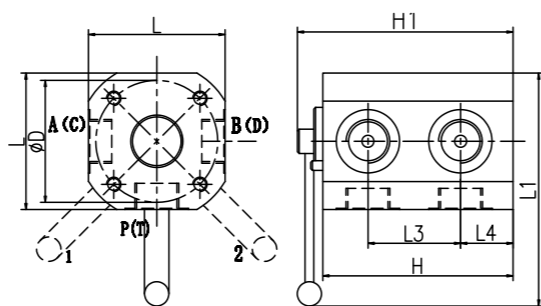
应用/APPLICATIONS:

连接P和T之间有两个压力流, 其中A和C连接到执行器的第一部分, B和D连接到执行器的第二部分。在使用的过程中, P与B相连, T和D相连的情况下, 手柄杆在正中央时不推荐使用。/Connect P to T to the 2 pressure flows, parts A and C to the first actuator and ports B and D to the second actuator. With lever in positive 1, P is connected to B and T to D. Use with lever in central positive is not recommended

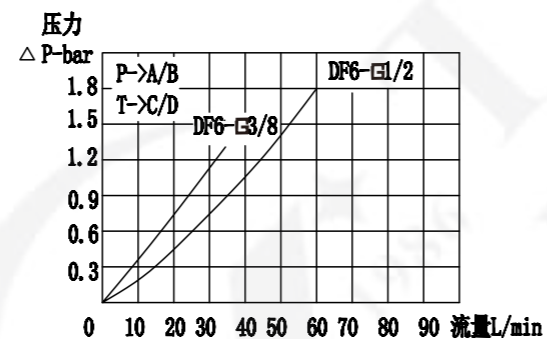
图形符号/SYMBOL:



外形尺寸/OVER DIMENSION:



流量曲线图/FLOW DIAGRAM:



型号说明/MODEL CODE:

1PC Type Ball Valve

DN	G
8	1/4"
10	3/8"
15	1/2"
20	3/4"
25	1"
32	1 1/4"
40	1 1/2"
50	2"
65	2 1/2"
80	3"



2PC Thread End Ball Valve

DN	M
8	20X1.5
10	24X1.5
15	30X2
20	36X2
25	42X2
32	52X2
40	60X3
50	72X3



3PC Type Ball Valve

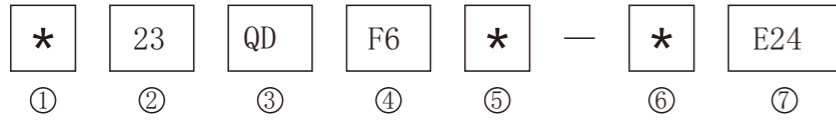
DN	G
8	1/4"
10	3/8"
15	1/2"
20	3/4"
25	1"
32	1 1/4"
40	1 1/2"
50	2"
65	2 1/2"
80	3"
100	4"



强度试验压力: PT2.4, 3.8, 6.0, 9.6MPa
公称压力: PN1.6, 2.5, 4.0, 6.4MPa
低压气密封式试验压力: 0.6MPa
适用介质: Q11F-(16-64)C水、油品、气
 Q11F-(16-64)P硝酸类
 Q11F-(16-64)R醋酸类
适用温度: -40~180 C

Strength testing pressure: PT2.4, 3.8, 6.0, 9.6MPa
Nominal pressure: PN1.6, 2.5, 4.0, 6.4MPa
Seat testing pressure (low pressure): 0.6MPa
Applicable media: Q11F-(16-64)C Water, oil, Gas
 Q11F-(16-64)P Nitric acid
 Q11F-(16-64)R Acetic acid
Applicable temperature: -40~180 C

型号说明/MODEL CODE:

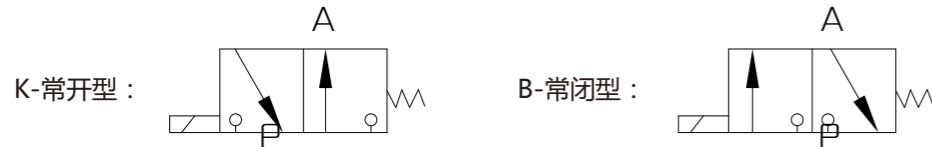


- ① 工作介质：无-矿物油 / W-乳化液或高水基液体
- ② 23：二位三通
- ③ 名称代号：球式电磁换向阀
- ④ 公称通径：6mm
- ⑤ 机能代号：K-常开 / B-常闭
- ⑥ 压力等级：31.5MPa / 20MPa
- ⑦ 额定工作电压：DC24V / AC220V



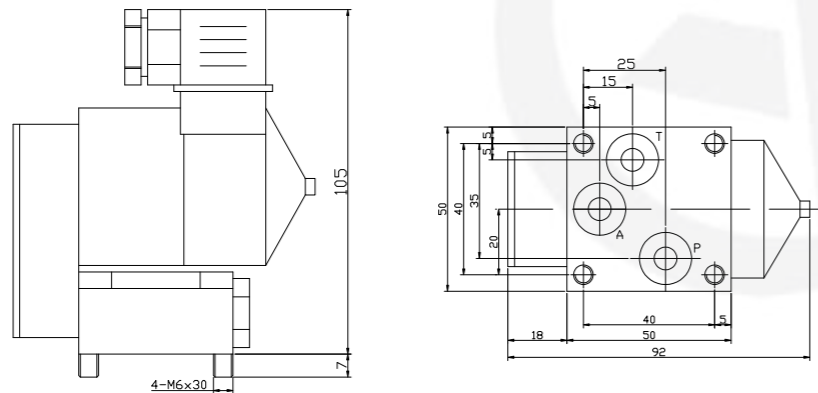
技术参数/TECHNICAL DATA:

- 压力等级：31.5MPa / 20MPa
- 适用介质：矿物油、乳化液或高水基液体
- 介质温度：-15°C-65°C
- 介质粘度：10-350cst

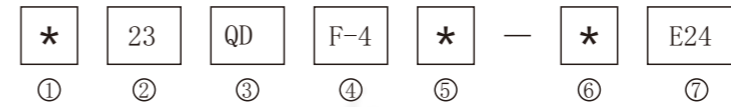


简介:

本司23QDF型球式电磁换向阀是依据国外资料研制而成。主要用于二通插装阀液压系统中实现无泄漏先导控制，在满足流量要求时也可作为其他执行机构的方向控制元件。本型球式电磁换向阀主要有电磁铁和换向阀组成，通过杠杆连接将电磁铁输出的推力放大，并通过推杆推动阀芯，实现换向。阀芯采用优质高精度钢球，无轴向密封长度，换向过程中不存在液压力造成的径向卡紧，因而换向可靠且响应快。根据此阀的结构特点及材质选用，使它广泛适用与矿物油、乳化液、高水基液体、甚至是气体介质的控制系统中。本型球式电磁换向阀采用卸荷型结构，能自动平衡系统工作介质压力变化对阀芯轴向作用力的影响，使阀口保持恒定密封力的密封状态。本阀是二位三通球式电磁换向阀。



型号说明/MODEL CODE:

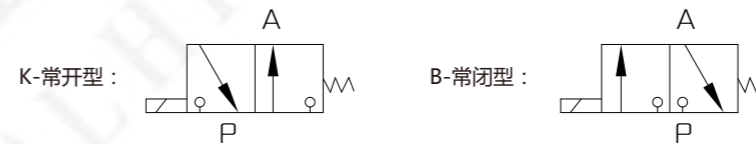


- ① 工作介质：无-矿物油 / W-乳化液或高水基液体
- ② 23：二位三通
- ③ 名称代号：球式电磁换向阀
- ④ 公称通径：6mm
- ⑤ 机能代号：K-常开 / B-常闭
- ⑥ 压力等级：31.5MPa / 20MPa
- ⑦ 额定工作电压：DC24V / AC220V



技术参数/TECHNICAL DATA:

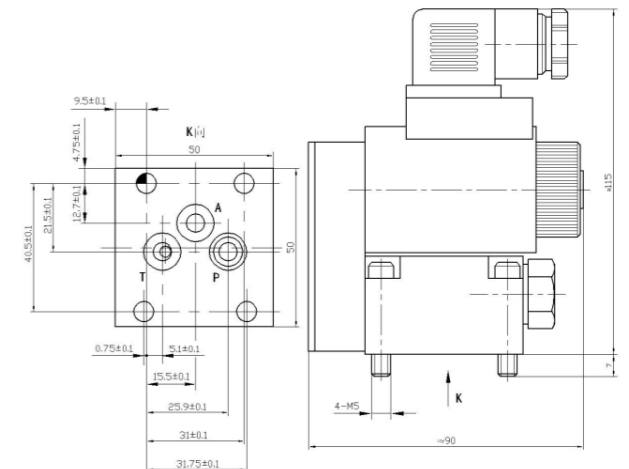
- 压力等级：31.5MPa / 20MPa
- 适用介质：矿物油、乳化液或高水基液体
- 介质温度：-15°C-65°C
- 介质粘度：10-350cst



简介:

本司23QDF-4型球式电磁换向阀是依据国外资料研制而成。主要用于二通插装阀液压系统中实现无泄漏先导控制，在满足流量要求时也可作为其他执行机构的方向控制元件。本型球式电磁换向阀主要有电磁铁和换向阀组成，通过杠杆连接将电磁铁输出的推力放大，并通过推杆推动阀芯，实现换向。阀芯采用优质高精度钢球，无轴向密封长度，换向过程中不存在液压力造成的径向卡紧，因而换向可靠且响应快。根据此阀的结构特点及材质选用，使它广泛适用与矿物油、乳化液、高水基液体、甚至是气体介质的控制系统中。本型球式电磁换向阀采用卸荷型结构，能自动平衡系统工作介质压力变化对阀芯轴向作用力的影响，使阀口保持恒定密封力的密封状态。本阀是二位三通球式电磁换向阀。

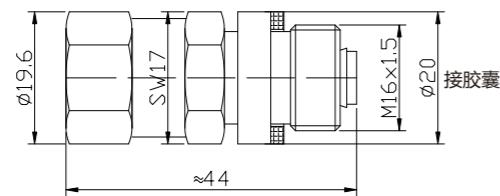
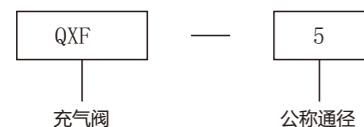
名称	型号	阀芯机能	机能代号	机能符号
二位	23QDF6K-4/315E*	常开型	K	
三通	23QDF6B-4/315E*	常闭型	B	



简介:

QXF型充气阀是蓄能器充气用的单向阀, 该阀借助充气工具向蓄能器充气, 充气完毕, 拆下充气工具后即可自行关闭。本阀亦可用于非腐蚀性气体的充装。本阀体积小、承压高、自封性能好的特点。

型号说明/MODEL CODE:



型号	充气压力范围 (MPa)	公称通径 (mm)	螺纹连接		配用蓄能器型号
			进口	出口	
QXF-5	4~40	5	M14x1.5	M16x1.5	NXQ-0.6~100*H

测压接头及测压软管

Pressure Testing Hose And Adapter

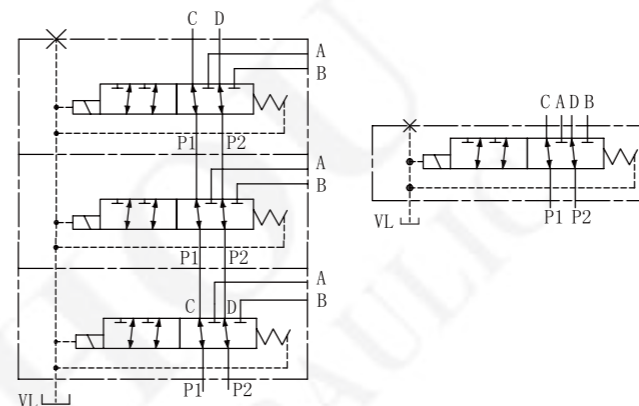
公称通径 Normal diameter d : 3.0mm
管子内径 Hose inside diameter d_i : 2.9mm
管子外径 Hose outer diameter D : 6.0mm
重量 Weight G : 23g/m
适用温度 Temperature range : -70 +260C
Chemical properties : (Acid-resistant)
Surrounding suitability : ozone-resistant, resistance to ultraviolet light and no moisture absorption
Max. dynamic pressure P_d : 40MPa
Max. quiescent pressure P_s : 64MPa
Min. burst pressure P_b : 160MPa
Min. bending radius R_{min} : 30mm
Life/Vida : According DIN20024
Safety Coefficient : 2.5 (Static) 4 (Dynamic)



机能符号 Symbols:

多个元件

MULTISTATION CONNECTION



型号说明/Ordering Code:

KVH	06	6	W	E	/				
-----	----	---	---	---	---	--	--	--	--

电磁多路阀
sectional solenoid
direction control
valves

6通径
Size NG06

油口的个数 (单个元件)
No. of port (Per valve)

螺纹连接 G3/8
Threaded connectors G3/8

泄漏油外排
Externally drainage

叠加的元件个数: 1/2/3/4/5
No. of valves: 1/2/3/4/5

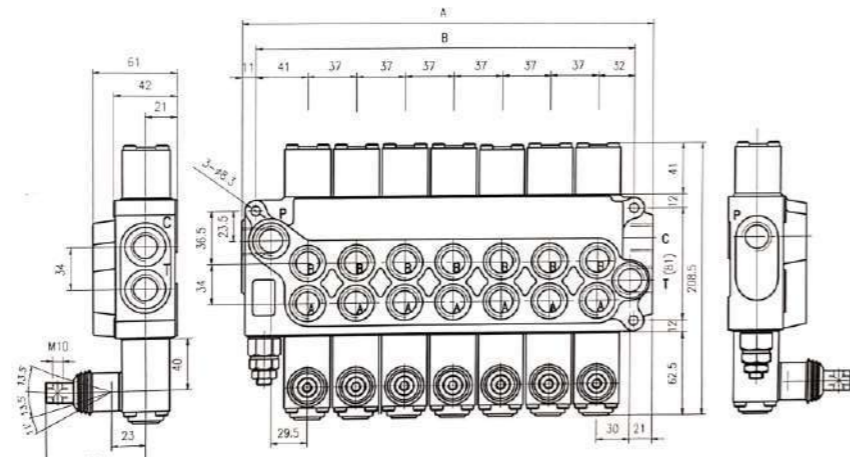
系列号
Series

氟橡胶 Viton =V
整流器 Rectifier =R
应急按钮 =E
Emergency button

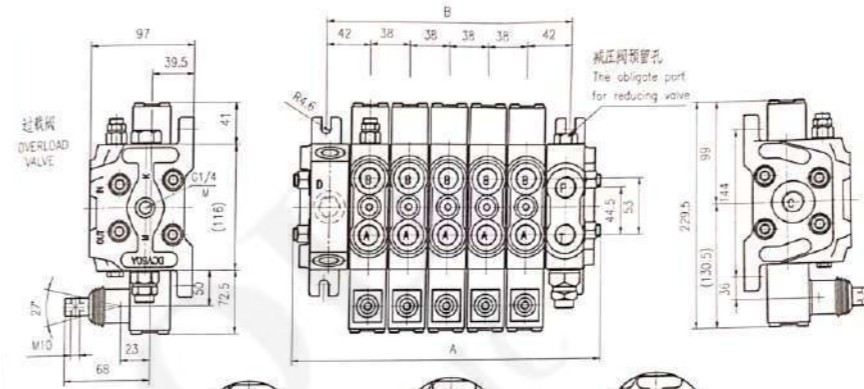
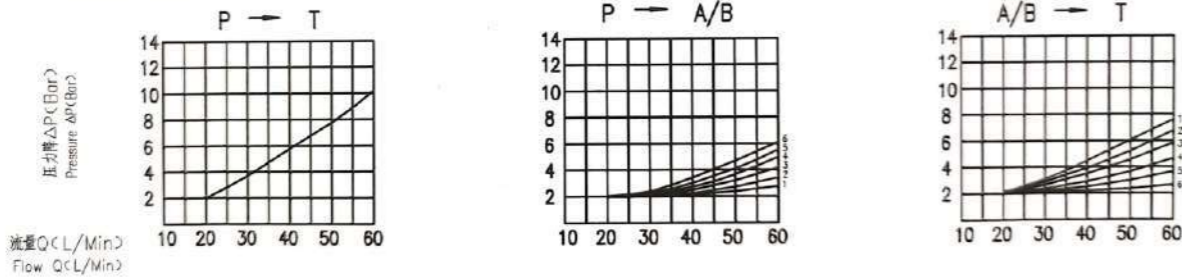
电压 Voltage D12=12V
D24=24V

技术参数/Specification:

参数\型号	KVH-06
最大流量 Maximum flow	50 l/min
最高工作压力 Maximum operating pressure	25Mpa
介质温度范围 Hydraulic fluid temperature	-15° C~70° C
介质粘度范围 Viscosity range	15—400mm ² /s
工作介质 Hydraulic oil	ISO VG 32, 46, 68
介质过滤精度 Fluid cleanliness	绝对精度25um或更高精度 NAS Class 9 MAX



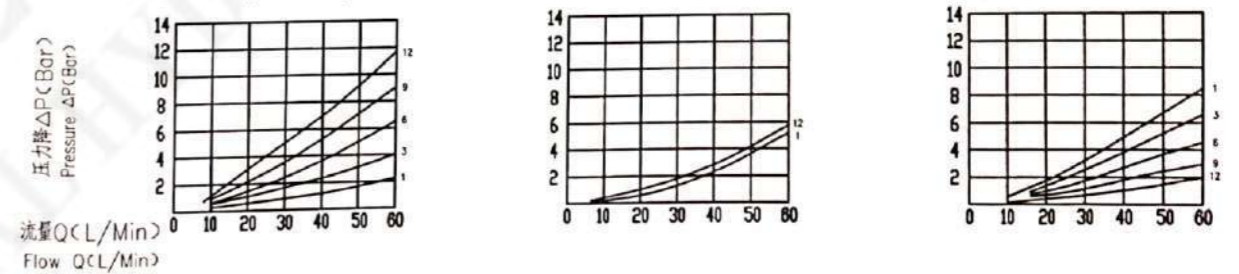
压力损失曲线
Pressure Drop Flow Curves



注：标准供货时D口没有。
Standard valves without D port.



压力损失曲线
Pressure Drop Flow Curves



阀型号 TYPE OF VALVE	尺寸 DIMENSIONS		
	A	B	标准重量 (公斤) WEIGHT (Kg)
DCV 40/1	103	73	5.4
DCV 40/2	140	110	7.4
DCV 40/3	177	147	9.4
DCV 40/4	214	184	11.4
DCV 40/5	251	221	13.4
DCV 40/6	288	258	15.4
DCV 40/7	325	295	17.4
额定流量: 40升/分钟 Nominal Flow: 40L/Min	最大流量: 60升/分钟 Max. Flow: 60 L/Min	最大压力: 350Bar Max. Pressuer: 350 Bar	标准螺纹: G1/2" Thread (standard): G/2"
最大允许背压: 60ar Backpressure in outlet sections: 60 Bar	阀片联数: 1~7 Workingsections: 1~7	阀芯行程: +5-5mm Spool stroke: +5-5mm	

阀型号 TYPE OF VALVE	尺寸 DIMENSIONS		
	A	B	标准重量 (公斤) WEIGHT (Kg)
DCV 60A/1	144	84	7.5
DCV 60A/2	182	122	10.1
DCV 60A/3	220	160	12.7
DCV 60A/4	258	198	15.3
DCV60A/5	296	236	17.9
DCV 60A/6	334	274	20.5
DCV 60A/7	370	312	23.1
DCV 60A/8	410	350	25.7
DCV 60A/9	450	388	28.3
DCV 60A/10	486	426	30.9
DCV 60A/11	524	464	33.5
DCV 60A/12	562	502	36.1
额定流量: 50升/分钟 Nominal Flow: 50L/Min	最大流量: 60升/分钟 Max. Flow: 60L/Min	最大压力: 315 Bar Max. Working Pressure: 315 Bar	标准螺纹: G1/2" Threads (standard): :G1/2"
		拉杆拧紧力矩: 55±3N·m Tie-rad tightening torque: 55±3N·m	阀芯行程: +5~5 Spool stroke: +5~5